

Demographic Study  
**Public School Enrollments**  
for  
**Avon Grove School District**  
375 South Jennersville Road, West Grove, PA 19390



Prepared by



**Sundance Associates**  
117 Greenvale Court  
Cherry Hill, NJ 08034

Tel 856-755-0174  
Fax 856-755-0176

January 21, 2022

---

## Table of Contents

	Pages
<b>Executive Summary</b>	
<b>INTRODUCTION &amp; BACKGROUND</b>	
Introductory Notes	1
Methodology Notes	2
Public School District Profile	3-4
Public & Private School Enrollment	5
<b>GENERAL DEMOGRAPHICS</b>	
Population Growth: Area, County and State	6
Comparative Municipal Population Growth	7
2010 Population by Age & Gender Pyramids	8
Comparative Populations by Age Group	9
Births: District and Municipal	10-11
<b>HOUSING &amp; NEW STUDENTS</b>	
Residential Permitting & New Construction	12
New Residential Construction & Impact on Enrollment	13
<b>METHODOLOGY</b>	
Cohort Survival Projections; Mathematical Analysis	14
Adjustments to Standard Methods	15
Review of Cohort Survival Ratios by Grades and	16
Cohort Growth: 2019 Kindergarten to Class of 2031 Gr 12	
<b>ENROLLMENT PROJECTIONS</b>	
Enrollment History 2000 to 2021	17
Reading the Enrollment Charts	18
District Wide Enrollments by Year	19
Elementary Grade K-2 and K-1 Enrollments	20
Intermediate Grade 3-6 and 2-5 Enrollments	21
Middle School Grade 7-8 and 6-8 Enrollments	22
High School Grade 9-12 Enrollments	23
Comparative Enrollments by Grade Level Organization	24
<b>APPENDIX:</b>	
<b>A. Cohort Survival Worksheets</b>	
1. Standard Projection	
2. Alt 2 Projection that is Adjusted "K:Gr 1" Projection, using	
Fall 2019 K: Gr 1 Survival Ratio	
3. Charter only 3 B:K S/Rs Projection	
4. Charter plus Cyber only 3 B:K S/Rs Projection	
5. Adjusted "All / Combined" Projection combining District,	
Charter and Cyber students as base	

---

## Executive Summary

**The Methodology** used in projecting enrollments is the recommended method of the Pennsylvania Department of Education (PDE) and is known as “Cohort Survival” or “Grade Level Progression”.

**The Avon Grove School District (AGSD)** had a student population of just 5,020 students (Oct 2021) in 4 schools, organized as a Grade K-2 Elementary, followed by a Gr 3-6 Intermediate School, a Grade 7 & 8 Middle School and a Grade 9-12 High School.

**The Municipalities** in the School District include seven municipalities in Chester County; the Boroughs of Avondale and West Grove, and Franklin Township, London Britain Township, London Grove Township, New London Township and Penn Township.

**Private School** enrollment levels start at 18.2% in Kindergarten, and 8.7% in Grade 1-4, increasing to 8.3% in Grades 5-8 and ending at 9.5% in Grades 9-12.

**Population Trends** are such that the school district area had a population of only 6,896 in 1950 which increased to 31,907 in the peak year of 2020.

**Age & Gender Pyramids**, with population counts in 5-year age groupings, show Child Bearing Age groups to be relatively small; and that the school age and pre-school age groups are successively smaller in size.

**Population by Age Group** from 1990 to 2010 to 2019 reveals an increase in the population of all groups with recent smaller rates of growth with the exception of School Age which decreased from 2010 to 2019.

**Live Births** in the AGSD have been slightly decreasing since year 2016 with a high of 345 Births in 2016. The 6-year trend is for 3.9 fewer births per year.

**Historic Residential permitting** for new construction peaked at 495 units in year 2004, and decreased to 46 units in 2015. The recent 6-year average is 53 units per year.

**Future Residential Permitting 2022-26** is not anticipated to rise above the recent 6-year average.

**School Age Children** will be generated by “below the average” units, but their counts are “built into” the projection that utilizes the 6-year average Grade Level Cohort Survival Rates. Therefore, NO modifications for students from new housing are made in this projection.

This study makes a Standard and two Alternate projections. The alternates are **Alternate #1 “All”** and **Alternate #2 “K:1”**.

The Standard projection utilizes 6 years of enrollment history to calculate 5-year average Survival Rates.

*The AGSD, with a year 2020 constituent population of 31,907 continues to grow at a moderately increasing rate.*

The **Alternate 1 “All”** projection is based on a combined projection that first includes all possible students within the district geography, in a standard projection i.e. all District, Cyber and Charter students. From that is subtracted a second **adjusted** projection that only includes combined Cyber and Charter students, and uses only the most recent 3 years average of the decreasing Birth to Kindergarten Survival Ratios. The remaining students are at the District. This alternate projection results in from 3 additional students in year one to 30 fewer students in year five.

The **Alternate 2 “K:1”** projects uses a reduced Kindergarten to Grade 1 Survival Ratio of 1.027 instead of the 6-year average of 1.108. This adjustment is made using the Fall 2019 to Fall 2020 Survival Rate that is the last prior to the Pandemic years. K:1 is the only Survival Rate that is adjusted. This adjustment results in an average of 26 fewer students in each future 1st Grade.

**District-wide Enrollment** increased by 73 students in the actual projection period ending at 5,020 students. The district enrollment will increase by 250 students to 5,270 in 2026 in the Standard projection, by 220 students to 5,240 in the Alternate 1 projection, and by 103 students to 5,123 in the Alternate 2 projection.

*Less accurate 6th to 10th year extended projections are not reported in this summary.*

**Elementary School Enrollment** for Grades K-2/1 increased by 194 students in the actual period ending at a high of 1,038 students. Enrollments will increase to 1,072 next year before realignment as a K-1 school and ending the projection period at 654 students in the Standard projection, at 697 students in the Alternate 1 projection, and at 629 in the Alternate 2 projection. Enrollments are under Capacity after the realignment.

**Intermediate School Enrollments** for Grades 3-6 (Gr 2-5 in Fall 2023) were stable for 4 years then decreased by 55 students to 1,429 students in the actual period. During the projection period, enrollments increase to a high of 1,685 in the Standard projection, to 1,670 in the Alternate 1 projection and to 1,562 in the Alternate 2 projection. Enrollments exceed PDE and Functional Capacity in all the projections.

**Middle School Enrollments** for Grades 7-8 (Gr 6-8 in Fall 2023) were stable averaging 827 students in the historic period. During the projection period, enrollments increase by 472 with the addition of a grade level in the Standard and Alternative 2 projection ending at 1,290 in year 2026, and are increasing in the Alternate 1 projection ending at 1,226. Enrollment is 16 students over the increased Functional Capacity in year 2026.

**High School Enrollments** for grades 9-12 decreased 60 students to 1,735 in the actual period. During the projected period, enrollments will decrease by 93 students to 1,642 students in the Standard and Alternate 2 projections, and decrease by 11 students to 1,724 in the Alternate 1 projection. Enrollments are under Capacity in all years following the new school opening.

*A Standard and two Alternate projections are made.*

*The District experienced a 73 student increase in the 6-year actual period. In the 5-year projection period, the district enrollment will increase by an additional 103-250 students.*

*In the 5-year projection period, ...*

*Avon Grove Elementary School enrollments are decreasing between 341 and 409 students, after reorganizing with one fewer grade level.*

*Avon Grove Intermediate School enrollments are increasing between 133 and 256 students after reorganizing as a Grade 2-5 school.*

*Middle School enrollments are increasing between 408 and 472 students after adding a grade level in the realignment as a Grade 6-8 school.*

*High School enrollments are decreasing between 11 to 93 students.*

Sundance Associates has been retained by the Avon Grove School District to prepare a demographic study of the district and to project enrollments from school year 2022-23 to school year 2026-27.

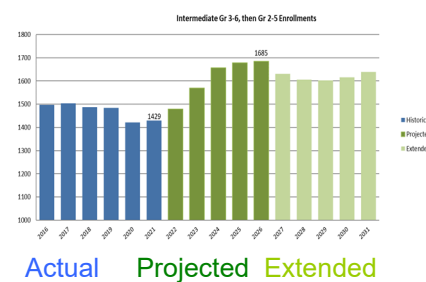
Actual enrollment data is from the official annual October submissions to PDE. Birth data is from the official web site of the Pennsylvania Department of Health.

The actual enrollments for this demographic study begin with the October 1 enrollment reports for the 2016-17 school year and end with the October 1 enrollment reports for 2021-22 school year. In projection graphs, the actual enrollments appear in blue.

The five-year enrollment projections begin with the 2022-23 school year and end with the 2026-27 school year and appear in dark green. The extended and less accurate 6-10 year projection is in light green.

Extensive data and graphics that support understanding of general demographic trends are provided, however, it is important to understand that they are for support purposes only. This projection is made based on Live Births and Historic Enrollment, *the two primary determinants of future enrollments*.

The information in this demographic report is suitable for inclusion in any document to be forwarded to the Pennsylvania Department of Education for matters concerning school facilities.



Although many techniques have been used to predict demographic trends including future enrollment, the method most widely employed and accepted for predicting future school enrollment is the “**Cohort-Survival**” method. **This method is considered the most reliable.** It captures the key determinants of enrollment, yet also allows for changes in historical trends, is relatively simple to apply and the data requirements are reasonable and usually easily fulfilled.

The major assumption underlying the cohort survival method is that the past to a large extent is a reasonable predictor of the future: that is, given the number of births and historical enrollment, the net effect of all other factors remain in relative balance.

However, any of the following factors could cause a significant change in projected student enrollments, and adjustments to the standard methodology may be made for:

- Boundary adjustments, school openings or consolidation
- Changes/additions in program offerings
- Preschool programs
- Change in grade configuration
- General Economic Conditions, Interest rates/unemployment shifts
- Magnet/Charter/Private school opening or closure
- Zoning changes
- New housing activity; planned, but not built, housing
- In and Out-Migration

The cohort-survival method requires the calculation of the ratio of the number of children in one grade in one year compared to the number of children who “survive” the year and enroll in the next grade the following year (see detailed Mathematical Analysis, page 14). Fluctuations in such data from year to year create a pattern over time from which an average rate may be calculated to project enrollment.

The reliability of the cohort-survival method is related to both the number of years one is projecting as well as the relative volatility of the historical data. Projections covering five years or less, especially at the elementary level, tend to be more reliable than projections going out more than five years. In addition, in some communities the numbers of births, population, household size, and net migration rates have held relatively steady which increases the reliability of the results. In other communities, one or more such variables exhibit extreme variation leading to less reliable results.

*The major assumption underlying the cohort survival method is that the past to a large extent is a reasonable predictor of the future.*

*The most important factors are Live Birth counts and historical, grade level Enrollment counts.*



The Institute of Educational Sciences, 1997 publication “Accuracy of Enrollment Forecast Methods”, reviews three special-purpose forecasting methods ... and three methods of universal applicability (the cohort-survival, percentage- survival, and law-of-growth methods) to help administrators grasp enrollment forecasting technicalities. **A comparison shows that the cohort-survival method consistently produced lower error rates for each five-year projection for median or mean error rates.**

## Profile: School District

The Avon Grove School District is a publicly funded school district located in West Grove, Pennsylvania, 19390. The District is located in a rural-suburban setting 34 miles southwest of Philadelphia, PA, and 18 miles northwest of Wilmington, DE. Avon Grove covers 67 square miles and consists of five townships and two boroughs. They include the Boroughs of Avondale and West Grove and Franklin Township, London Britain Township, London Grove Township, New London Township and Penn Township in Chester County, Pennsylvania.

In the fall of 2021, the district operates one High School, one Middle School, and two Elementary Schools with a combined enrollment of 5,020 students. The schools are;

**Penn London Elementary School** (K-2) with 1,038 students averaging 346 students per grade.

**Avon Grove Intermediate School** (3-6) with 1,429 students averaging 357 students per grade.

**Fred S. Engle Middle School** (7-8) with 818 students averaging 409 students per grade

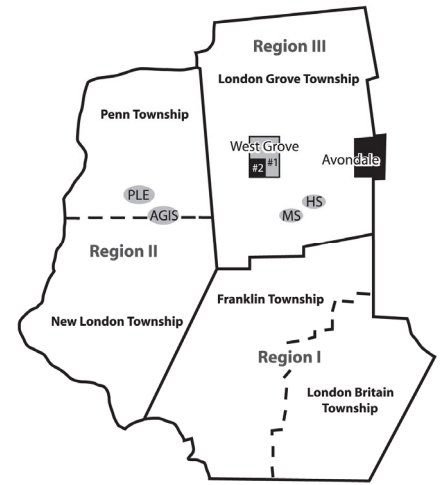
**Avon Grove High School** (9-12) with 1,735 students, averaging 434 students per grade

The District began offering **full-day kindergarten** in the 2017-18 school year. The inaugural-year .

The District will open a new High School in September 2022 that will be followed by a realignment of grade levels in the remaining schools and increased Capacity at the Middle and High Schools. The grade level realignments and increased capacities are evidenced in all tables and charts in this report.

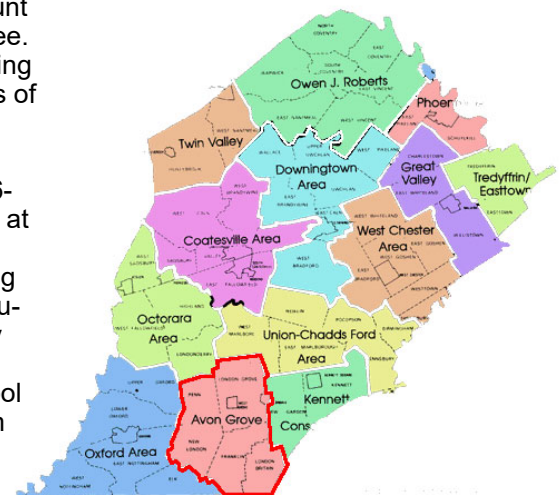
Avon Grove High School offers students a **dual-enrollment program**. This program allows high school students to take college credit-earning courses while remaining enrolled at their high school. The courses count towards both high school graduation requirements and a college degree. In the 2016-17 school year, 94 Avon Grove students earned 213 passing grades in dual-enrollment programs, with an estimated college savings of \$66,500.

The District began implementing its **1:1 Technology Initiative** in 2016-17, issuing a Chromebook to every seventh- and eighth-grade student at Fred S. Engle Middle School in the program's inaugural year. The Chromebooks are a gateway to Schoology, the District's digital learning management system. Through Schoology, students can access curriculum and content, including text, video and other resources provided by their teachers. The Chromebooks allow students to access the same engaging materials whether at school or at home. In the 2017-18 school year, all sixth-graders received a device. By 2018-19, all students from grades six through twelve had a District-provided device.



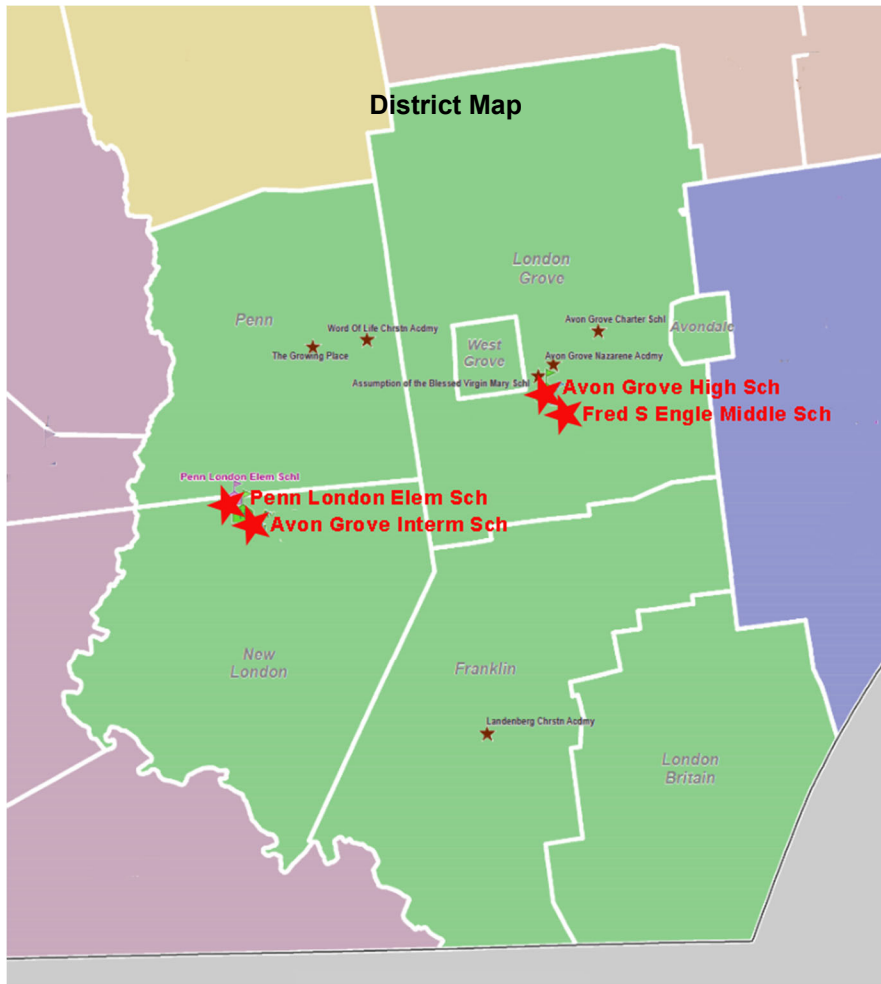
*The Avon Grove School District is in southern Chester County, and serves over 5,000 students in grades K-12.*

Chester County PA School Districts





## Profile: School District



**Penn London Elementary School**  
383 South Jennersville Rd.  
West Grove, Pa 19390

**Avon Grove Intermediate School**  
395 South Jennersville Rd.  
West Grove, Pa 19390

**Fred S. Engle Middle School**  
107 School House Rd.  
West Grove, Pa 19390

**Avon Grove High School**  
257 State Rd.  
West Grove, Pa 19390



### New Schools and Grade Level Realignments

The new Avon Gove High School is under construction and will open in September 2022 as a grade 9-12 school.

In September 2023, Penn London ES will be realigned from grades K-2 to grades K and 1. Also in 2023, Avon Grove Intermediate will be realigned as grades 2 to 5, from grades 3-6 and the Middle School will be realigned as grades 6 to 8 from 7-8, and High School will remain as 9 to 12. These changes are reflected in the vertical enrollment bars and red capacity lines on the school projection graphs.

	Capacity 2021		Capacity 2023	
	Functional	DPE	Functional	DPE
Penn London Elementary School	902	1025	902	1025
Avon Grove Intermediate School	1488	1575	1488	1575
Fred S Engle Middle School	807	854		
New Middle School			1274	1433
Avon Grove High School	1433	1676	1750	2059
	4630	5130	5414	6092





## Public & Private Schools

### Comparative Enrollment 2017-19

The following data is an average of the period 2017-19 (latest available) from the American Community Survey 3-Year estimates. The data is presented as the survey collates the information which is not as the District organizes the schools.

Kindergarten enrollment, was at 81.8% public, slightly higher than the county and less than the state, and 4.5% higher than the previous half-day counts.

Elementary School (Grades 1-4) at 93.3% public is 10% more than the county or and 6% more than state, and increased slightly over the prior report

Middle School (Grade 5-8) at 91.7% public is about 8% more than the comparable county and 6% more than the state public school enrollments, and has increased 0.5% in the last 5 years.

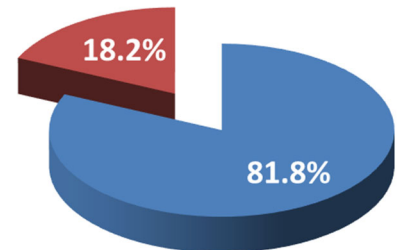
High School (Grade 9-12) at 90.5% public is about 6% more than the comparable county and 1% more than the state public school Enrollments, and is up 5% over the last 5 years.

The 2013-16 statistics from the previous report are provided in the table below for comparative purposes. They substantiate a general increase in public school enrollment across all grade levels.

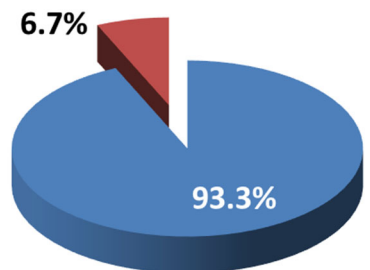
		2013-16 AGSD	2017-19 AGSD	2017-19 Ches Co	2017-19 Penn
<b>Kindergarten</b>	<b>Public</b>	77.2%	81.8%	80.1%	83.9%
	<b>Private</b>	22.8%	18.2%	19.9%	16.1%
<b>Elementary Gr 1-4</b>	<b>Public</b>	93.0%	93.3%	85.2%	85.6%
	<b>Private</b>	7.0%	6.7%	14.8%	14.4%
<b>Middle Gr 5-8</b>	<b>Public</b>	91.2%	91.7%	83.3%	86.0%
	<b>Private</b>	8.8%	8.3%	16.7%	14.0%
<b>High Sch Gr 9-12</b>	<b>Public</b>	88.6%	90.5%	84.8%	86.7%
	<b>Private</b>	11.4%	9.5%	15.2%	13.3%

**SOURCE:** American Community Survey 2018-20 found at <http://factfinder2.census.gov/faces/tableservices/jsf/pages/productview.xhtml?>

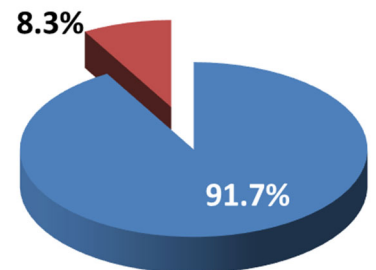
### Kindergarten



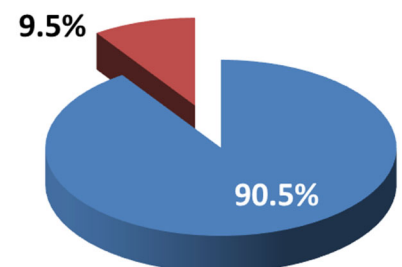
### Elementary Gr 1-4



### Middle Gr 5-8



### High School Gr 9-12





## Population Growth

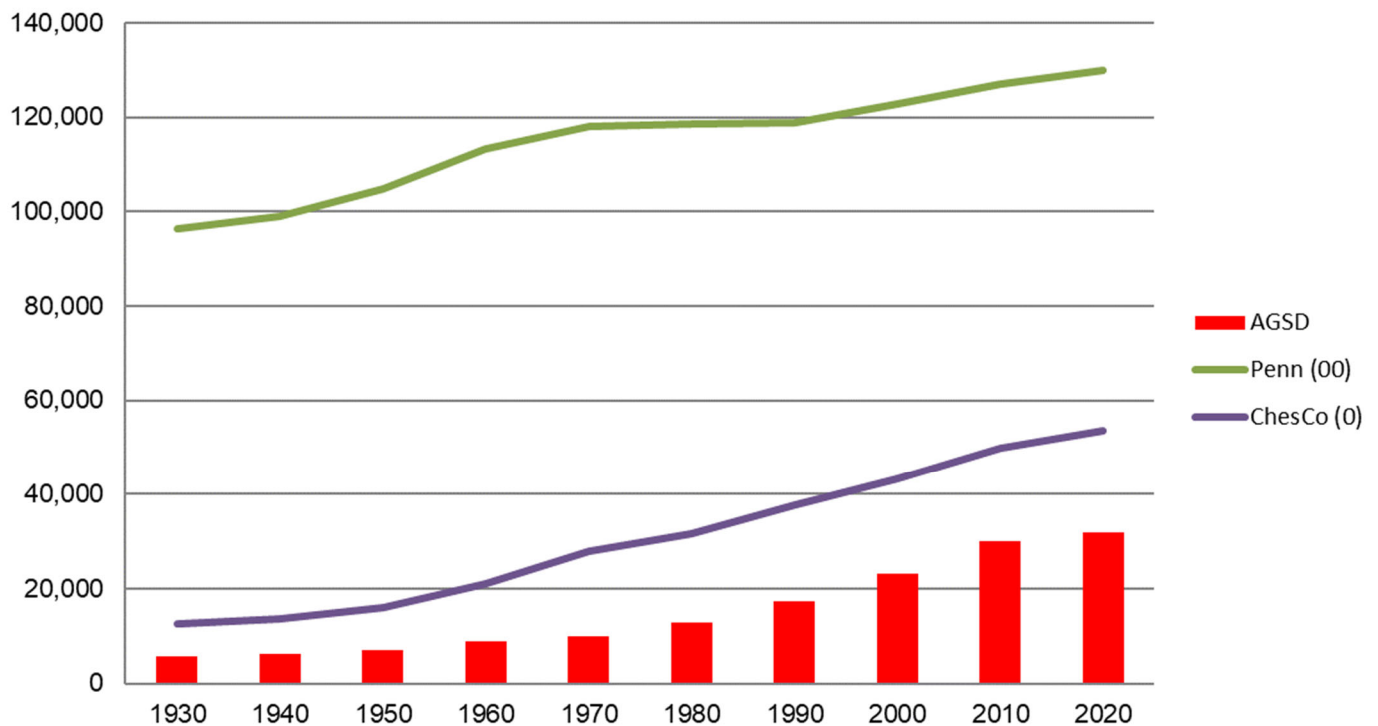
Comparative School District,  
County and State

The AGSD population was 31,907 persons, as of the US Census 2020, up by nearly 2,000 from 30,080 in 2010.

*The AGSD population was 31,907 persons as of the US Census 2020.*

	1930	1940	1950	1960	1970	1980	1990	2000	2010	2020
<b>AGSD</b>	5,810	6,106	6,896	8,802	9,937	12,908	17,432	23,067	30,080	31,907
<b>Chester Co</b>	126,629	135,626	159,141	210,608	278,311	316,660	376,396	433,501	498,886	534,413
<b>Pennsylvania</b>	9,631,350	9,900,180	10,498,012	11,319,366	11,793,909	11,863,895	11,881,643	12,281,054	12,702,379	13,002,700

### Local AGSD-County-State Comparative Population

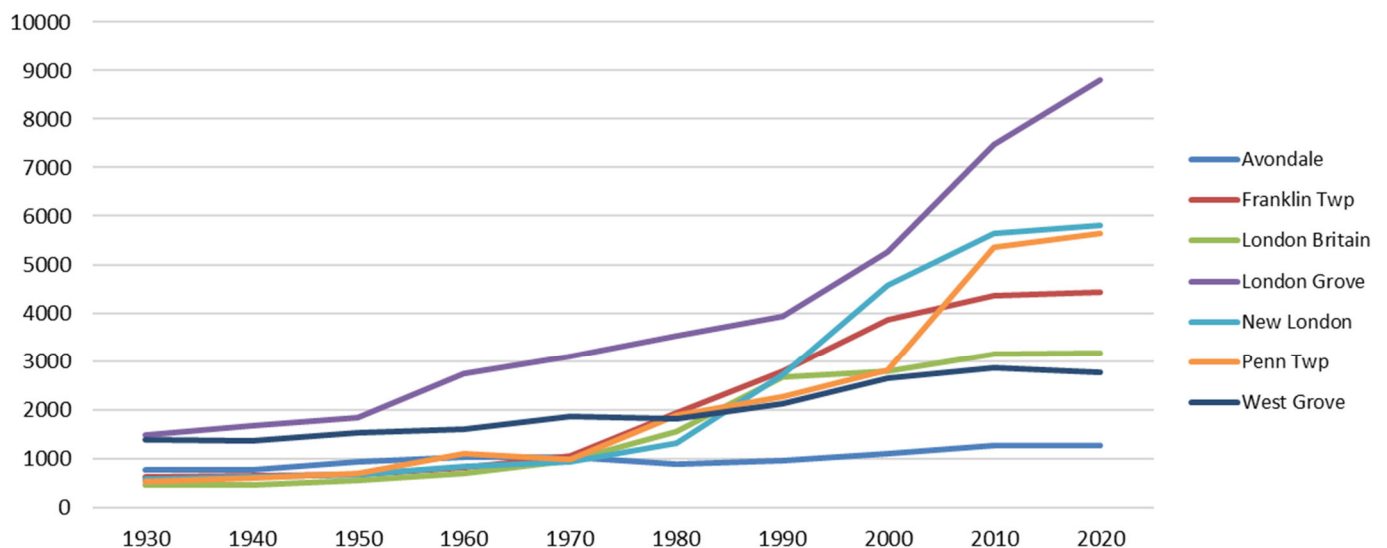




## Population Growth Municipal Comparison

	1930	1940	1950	1960	1970	1980	1990	2000	2010	2020
Avondale	763	754	941	1,016	1,025	891	954	1,108	1,265	1,274
Franklin Twp	620	655	666	817	1,043	1,920	2,779	3,850	4,352	4,433
London Britain	455	462	559	686	963	1,546	2,671	2,797	3,139	3,179
London Grove	1,484	1,666	1,844	2,734	3,109	3,531	3,922	5,265	7,475	8,797
New London	576	624	660	845	938	1,312	2,721	4,583	5,631	5,810
Penn Twp	537	588	705	1,097	989	1,888	2,257	2,812	5,364	5,644
West Grove	1,375	1,357	1,521	1,607	1,870	1,820	2,128	2,652	2,854	2,770

**Municipal Populations**



London Grove, the fastest growing of the constituent municipalities, grew by 1,322 persons or 17.7% between 2010 and 2020.

Penn Township grew by 280 persons or 5.2%.

The remaining municipalities grew by less than 5%, except for West Grove that decreased 84 persons between 2010 and 2020.



## 2010 Population Age & Gender Pyramid School District

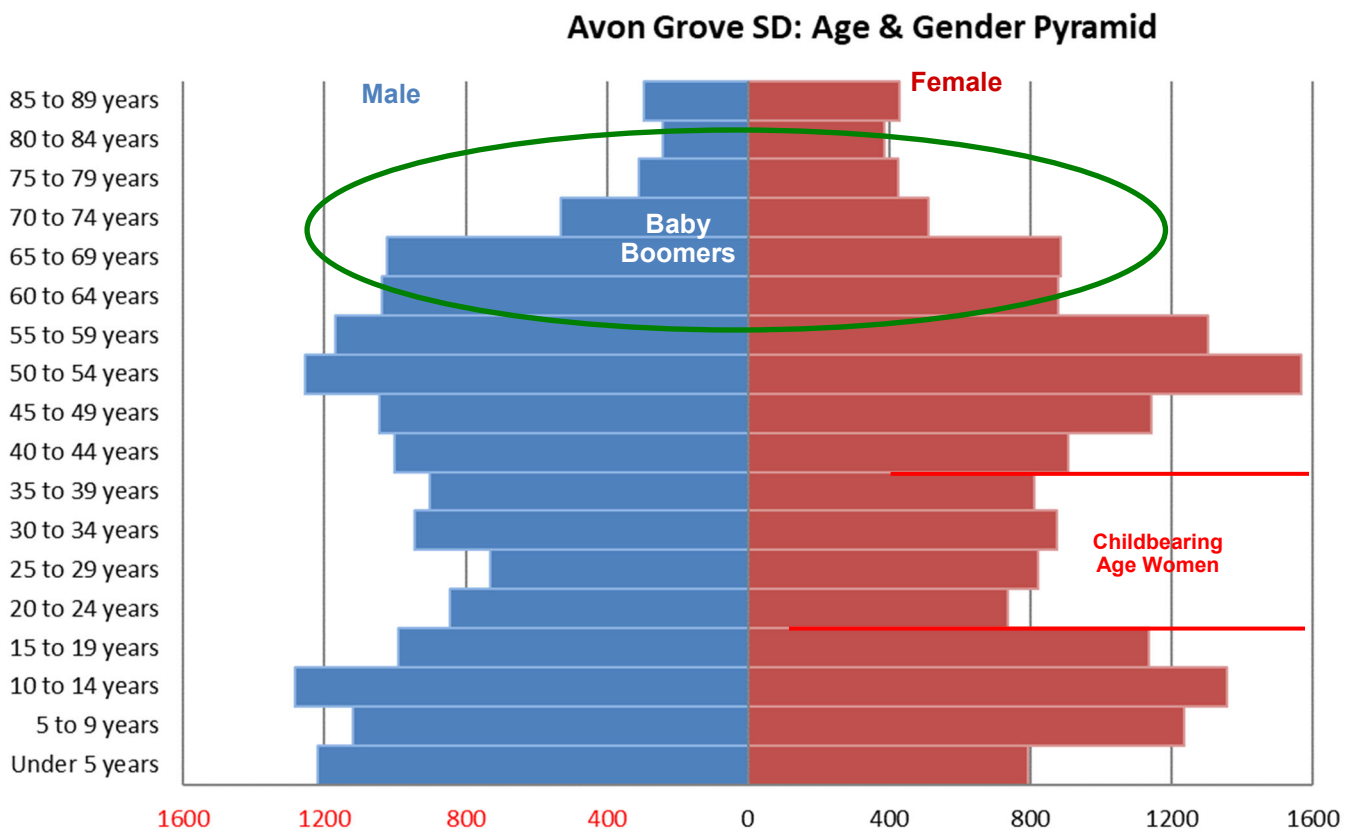
The 2010 Age & Gender Pyramid for the municipality illustrates population counts in 5 year groups with Males on the left and Females on the right.

Of particular interest in school demography is the size of the prime childbearing age groups between 20 and 39 years of age. The female counts in these groups are smaller than adjacent, older age groups, averaging 81 fewer women per year...and of the adjacent, younger age groups.

*The under 5 age group was 343 persons less than the 5-9 age group or about 68 per year*

*Childbearing age women are decreasingly smaller in the younger ages.*

Of real importance is that the Under 5 group is smaller than the 5-9 group indicating the possibility of decreasing elementary enrollments each year in the near future.





## Comparative Population by Age Groups School District

Population by Age Group from 2000 through 2010 to 2020 reveals significant changes in all school relevant categories.

**Pre-School Age** (0-4) increased by 88 between 2000 and 2010, and by 348 between 2010 and 2020.

**School Age** (5-17) increased by 2,165 between 2000 and 2010 and decreased by 477 between 2010 and 2020.

**Childbearing Age** (18-39) increased 1,596 between 2000 and 2010 and by only 538 between 2010 and 2020, but still increased.

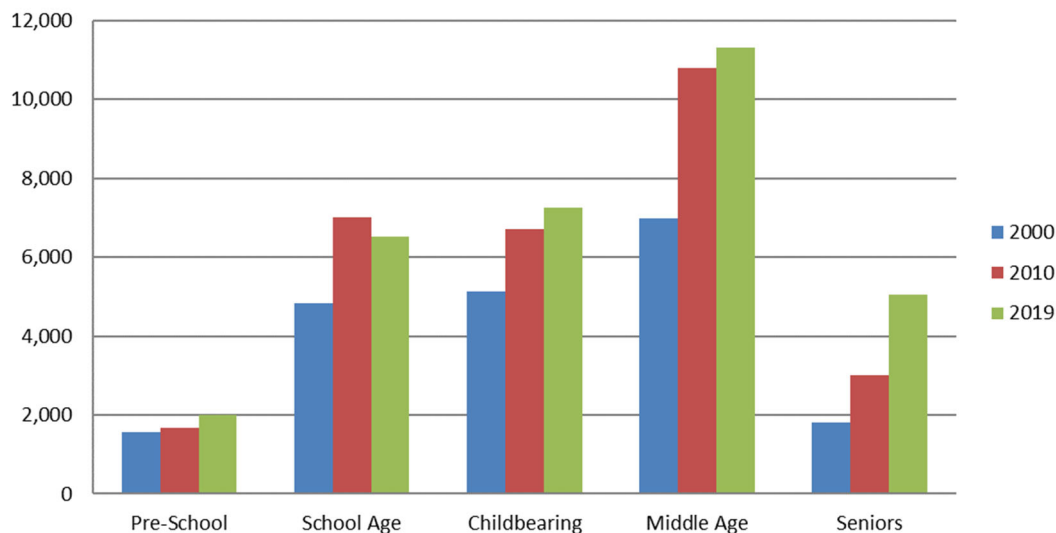
**Middle Age** (40-64) increased 3,812, then increased by only 506.

**Seniors** (65+) increased by 1,199 persons between 2000 and 2010, and by 2,031 between 2010 and 2020.

*Over the period, 2000 - 2010, Pre-School counts increased, by 88 persons, and then by 348 persons between 2020 and 2020.*

*School Age populations increased in the first ten years and decreased in the second nine years.*

**Avon Grove SD: Population by Age Group**



The increasing Pre-School age group supports an increasing school enrollment, while the increase in the Child Bearing Age group also indicates a probable continued increase of Births and further increases in the Pre-School group.

Age	2000	2010	2019
<b>Pre-School</b> 0-4	1,576 88	1,664 348	2,012
<b>School Age</b> 5-17	4,843 2,165	7,008 -477	6,531
<b>Childbearing</b> 18-39	5,120 1,596	6,716 538	7,254
<b>Middle Age</b> 40-64	6,992 3,812	10,804 506	11,310
<b>Seniors</b> 65 +	1,809 1,199	3,008 2,031	5,039
	<b>20,340</b>	<b>29,201</b>	<b>32,146</b>

Percents	1990	2000	2010
<b>Pre-School</b>	7.75%	5.70%	6.26%
<b>School Age</b>	23.81%	24.00%	20.32%
<b>Childbearing</b>	25.17%	23.00%	22.57%
<b>Middle Age</b>	34.38%	37.00%	35.18%
<b>Seniors</b>	8.89%	10.30%	15.68%
	100%	100%	100%



## District Annual Births

The number of babies born to families who reside in the district is a significant factor effecting enrollments. Birth counts from “5 years earlier” are used for the “Birth to Kindergarten” Survival Ratios in the standard Cohort Survival projection method. Births are the starting point for all cohorts.

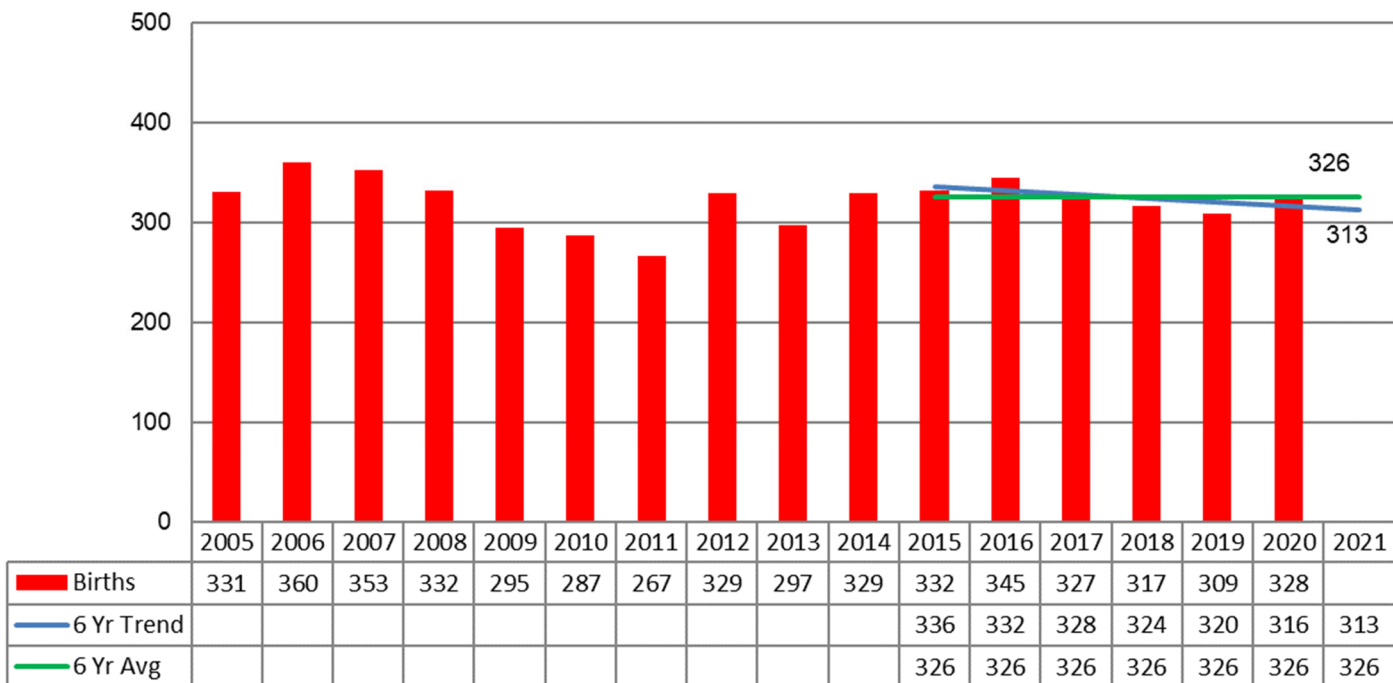
Combined Births in the area municipalities have decreased slightly for the last 3 years of the 6-year projection period. The 6-year trend, is perhaps more indicative of recent levels of birth. The 6-year trend is for about 3.9 fewer births every year.

However births could easily turn around and start an increase as they did in 2012. It is for that reason that **the Cohort Survival methodology is based on averages**. The 6-year average is from the same years as the 6-years of actual enrollments that is the basis of the Cohort Survival projection used in this study. The 6-year average is 326 births per year.

*Births have been averaging 326 per year for the last 6 years paralleling the last 6 years of actual enrollment data on which the projection is based.*

*The 6-year trend is for about 4 fewer births per year.*

AGSD Combined Calendar Births



SOURCE: Births Data from Pa Department of Health found at <http://www.statistics.health.pa.gov/Pages/default.aspx#.VckGXzZRGUk>





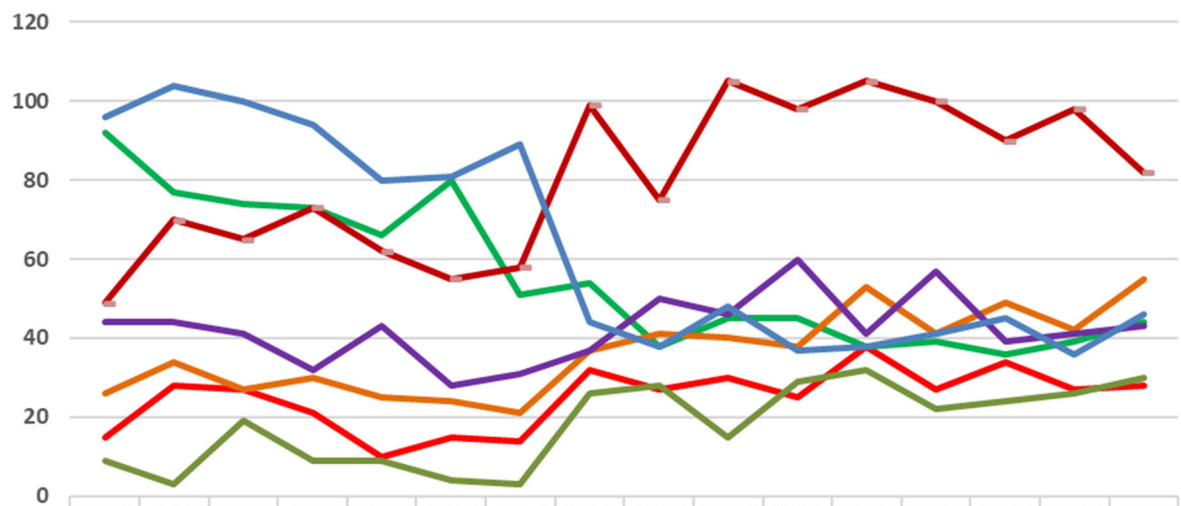
## Municipal Annual Births

Live Births in each contributing municipality are provided below.

Live Births are generally trending **higher** in;  
New London where Births are trending 1.7 more per year, and  
West Grove where Births are trending 1.2 more per year.

Live Births are generally trending **lower** in;  
Franklin Township where Births are trending 0.3 fewer per year, and.  
Avondale where Births are trending 0.1 fewer per year, and.  
London Britain where Births are trending 0.3 fewer per year, and.  
London Grove where Births are trending 3.2 fewer per year, and.  
Penn Township where Births are trending 2.9 fewer per year.

AGSD Births by Municipality & Calendar Year



	2005	2006	2007	2008	2009	2010	2011	2012	2013	2014	2015	2016	2017	2018	2019	2020
Franklin Twp	15	28	27	21	10	15	14	32	27	30	25	38	27	34	27	28
Avondale Boro	92	77	74	73	66	80	51	54	38	45	45	38	39	36	39	44
London Britain Twp	9	3	19	9	9	4	3	26	28	15	29	32	22	24	26	30
London Grove	49	70	65	73	62	55	58	99	75	105	98	105	100	90	98	82
New London Twp	26	34	27	30	25	24	21	37	41	40	38	53	41	49	42	55
Penn Twp	44	44	41	32	43	28	31	37	50	46	60	41	57	39	41	43
West Grove Boro	96	104	100	94	80	81	89	44	38	48	37	38	41	45	36	46

Source: Pa Dept. of Health at [http://www.portal.state.pa.us/portal/server.pt/community/health\\_statistics\\_and\\_research/11599](http://www.portal.state.pa.us/portal/server.pt/community/health_statistics_and_research/11599)



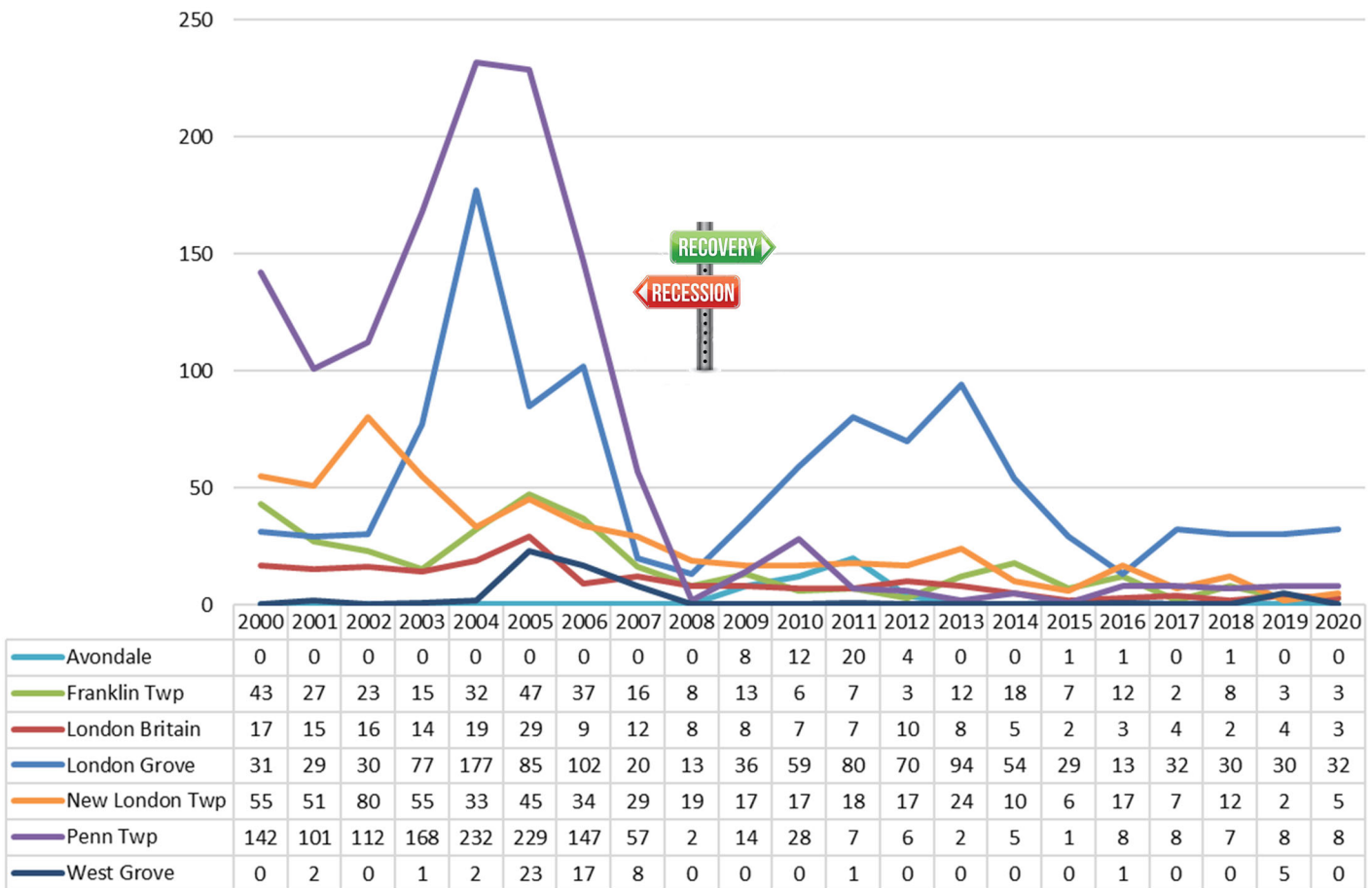
## Residential Permitting History for New Construction

A Building Permit is obtained by a developer after approval of a major sub-division, and when construction of a “next phase” of residential units is eminent. Residential Building Permits are often correlated with population growth in a community. Significantly, there had been less development in the District in the period 2008-18, except for London Grove.

*Residential permitting has been low except for London Grove.*

As with the nation, residential development in the District had been depressed for several years. The southeastern PA economy, however, is reported to be in recovery. However there is no significant recovery within the geographies of the School District.

Permits by Municipality



**SOURCE:** <http://socds.huduser.org/permits/index.html> and Local Planning Officials



## Residential Permitting for New Construction and Impact on Enrollment

The period 2015-2020, a low point in permitting, yielded only an average of 53 single-family permits per year.

All municipalities were contacted relative to future Residential construction. Any construction levels "above the average" would add Public School Age Children (PSAC) to the projection.

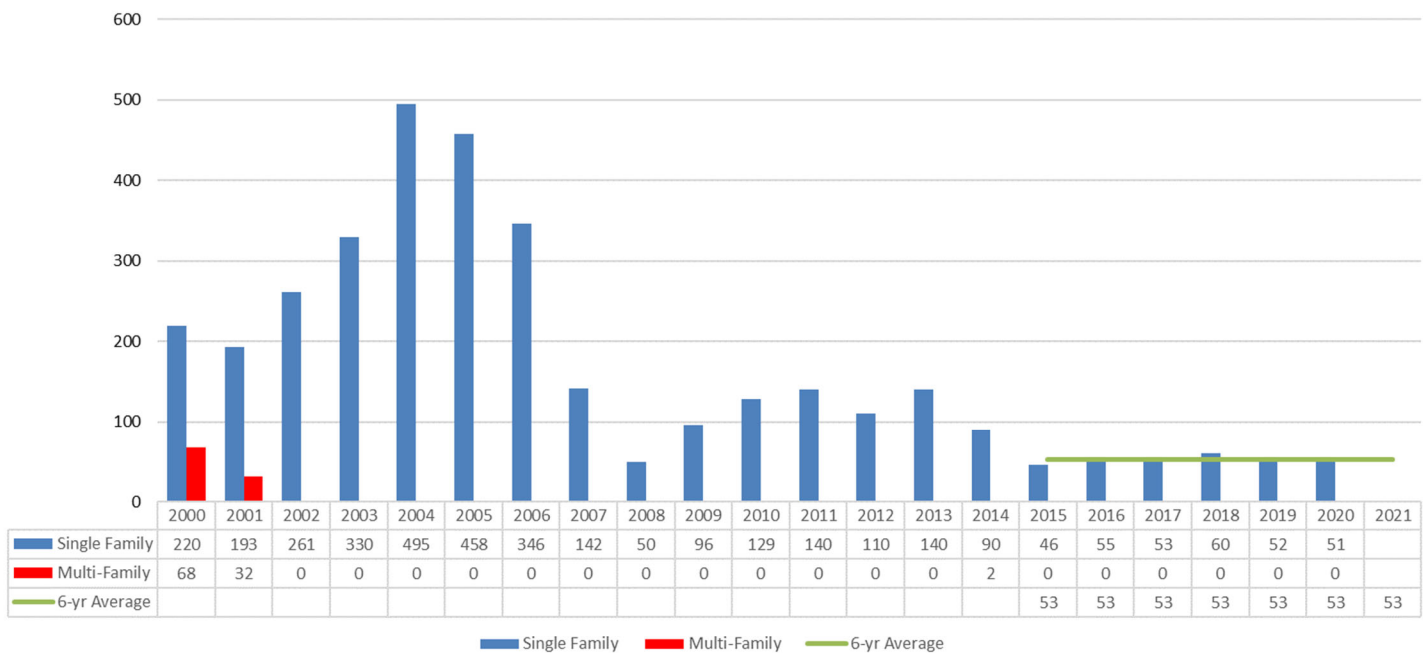
No municipality has approved permits for residential construction that would place future Occupancies above their individual municipal average or combined municipalities above the District average.

*No students are added to the projection from new housing.*

Some level of new students from new housing is already "built into" the grade level Survival Rates derived from the 6 actual years of enrollments.

However, no additional students are added to the standard projection.

Residential Permits by Building Type



**SOURCE:** <http://socds.huduser.org/permits/index.html> and Local Planning Officials



## Cohort Survival Methodology Mathematical Analysis

Cohort Survival is the name given to the method of projecting enrollments which is recommended by the Pennsylvania Department of Education. The most important terms, concepts and methodology are illustrated herein.

Cohort Survival projections are based on historic enrollment and birth data in the individual school district and incorporate six years of demographic data. They are considered very reliable where trends are expected to continue, without significant change in housing or birth rates.

Cohort is the name given to the common groups of children originally born in a given year and progressing, together, through the school system, one grade level to the next.

Survival Ratios refer to the number of students from one year and grade level who “survive to” or enter the next grade level the following year.

For example, in the sample partial table in the side bar, historic enrollments show 328 students in 1st Grade in year 2013-14, following a 289 student Kindergarten in year 2012-13. This yields a Kindergarten to First Grade **Survival Ratio** of 1.135 (or  $328 \div 289$ ). Another expression of the Survival Ratio would be that 113% of the Kindergarten students “survived” to 1st Grade.

Similar calculations are made for “survival” from Births Five Years Earlier to Kindergarten, and for each and every grade level transition in each and every year of historical enrollments which are used. In general, six years of historic data will yield five Survival Ratios for each grade level change, Birth to K, K to 1, 1 to 2, etc.

The **Average Survival Ratio** is then calculated for each grade level change. In the side-bar example 1.165 is the 6-year average Kindergarten to Grade 1 ratio and 1.051 is the 6-year Grade 1 to Grade 2 Survival Ratio.

The sample projections use the past school year 2016-17 enrollments, at the bottom of the Historic chart, as a base year. The Average Cohort Survival Ratios are applied to those base year enrollments and to the actual and estimated births, and projected into the next year, one grade level higher.

In the side-bar example 331 Kindergarten students in 2018-19 survive at a rate of 1.165 as a 2019-20 First Grade of 386 students. This similar projection is made across all grade levels for a 5-year period. Finally, the individual grade level enrollment projections are summed across each year to determine district-wide enrollments in that year.

*Enrollment projections have been made using the Cohort Survival method.*

*Modifications were made for the rising school year for which the current grade level counts were used.*

### Historic Enrollments

School Year	Births		K		1st Gr.	2nd Gr.	3rd Gr.
	5 Sch Yrs. Ago	"s"	"s"	"s"	"s"	"s"	"s"
2011-12	169	1538	260	308	327	404	
2012-13	175	1651	289	313	338	336	
2013-14	132	2,091	276	328	319	351	
2014-15	131	1,915	251	308	340	328	
2015-16	143	1,720	246	290	327	362	
2016-17	187	1,545	289	299	302	346	
6 Yr Avg SR		1.744	1.165	1.051	1.043		

### Projected Enrollments

5-YR PROJECTIONS		K		1st Gr.	2nd Gr.	3rd Gr.
School Year	5 Sch Yrs. Ago	"s"	"s"	"s"	"s"	"s"
2017-18	185	1,744	323	337	314	315
2018-19	190	1,744	331	376	354	328
2019-20	187	1,744	326	386	395	369
2020-21	181	1,744	316	380	406	412
5 Yr Average			324	368	399	423
2021-22	186	1,744				

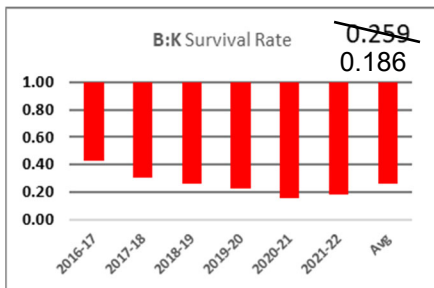


## Cohort Survival Methodology Adjustments

### Alternate 1 "All-in" Projection

Alternate 1 "All-in" projection starts with historical enrollments that include all students from the District, the Charter School and all Cyber students at every grade level for the last 6 years. That base projection is made using a standard Cohort Survival methodology.

A separate "adjusted" projection is made for the combination of the Charter plus Cyber students. The adjustment is made using the most recent 3 B:K Survival Rates rather than all six. This reduces the future Survival Rate to 0.186 from 0.259.



The projection for Charter + Cyber is then subtracted from the District + Charter + Cyber,... and the remaining counts are the District projection.

*Modifications were made to the Standard projection for 2 Alternate projections.*

### Alternate 2 "K:1 Survival Rate" Adjustment

In reviewing the K:1 Grade Level Survival Rates, it is seemingly evident that the Survival Rates in the last two pandemic-impacted years were volatile.

However, It is possible that the Fall 2019 to Fall 2020 Survival Rate might be correct moving forward, following the start of Full-day Kindergarten, and that assumption is the basis for Alternate 2 "K:1" projection.

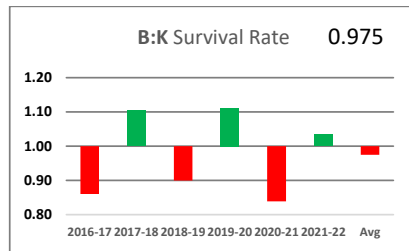
2019-20 SR of 1.027

1.027 used for all future years instead of the 6-year Average of 1.108

Standard Cohort-Survival Enrollment									
DISTRICT NAME:			Avon Grove School District						
COUNTY:			Chester						
DATA ISSUES:			Enrollments are from October 1 reports						
"s" = survival rate									
School Year	Births Ago	s"	K	1st Gr.	2nd Gr.	3rd Gr.	4th Gr.	5th Gr.	6th Gr.
			"s"	"s"	"s"	"s"			
HISTORIC DATA			Half						
2016-17	287	0.861	247	289	308	316	316	316	316
2017-18	267	1.105	295	266	316	316	316	316	316
2018-19	329	0.900	296	319	290	316	316	316	316
2019-20	297	1.111	330	333	334	316	316	316	316
2020-21	329	0.839	276	339	317	316	316	316	316
2021-22	332	1.033	343	340	355	316	316	316	316
6 Yr Average Survival Rate			1.027	1.046	1.096				
Change # Students									
Change % Students									
5-YR PROJECTIONS			336	352	356	316	316	316	316
2022-23	345	0.975	319	345	369	316	316	316	316
2023-24	327	0.975	309	327	361	316	316	316	316
2024-25	317	0.975	301	317	342	316	316	316	316
2025-26	309	0.975	320	309	332	316	316	316	316
2026-27	328	0.975							
Change # Students									

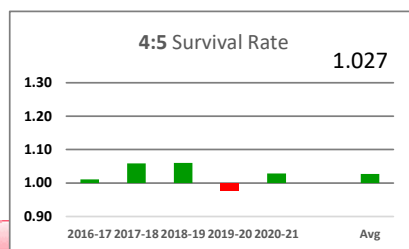
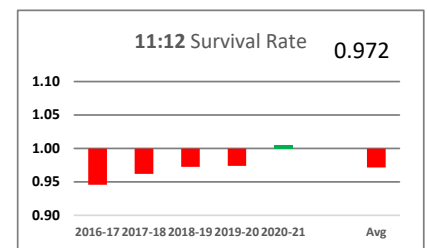
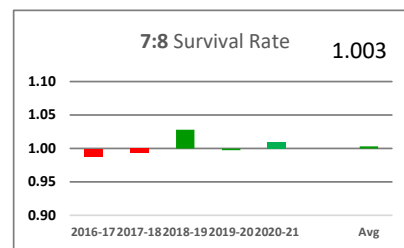
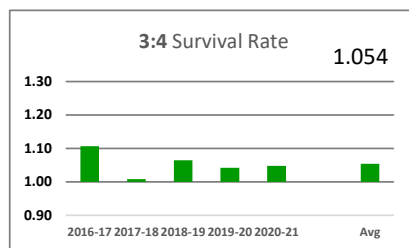
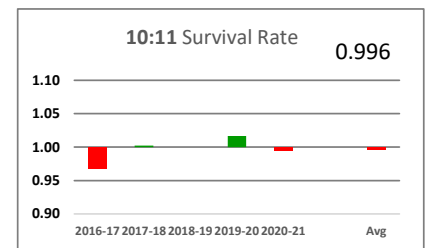
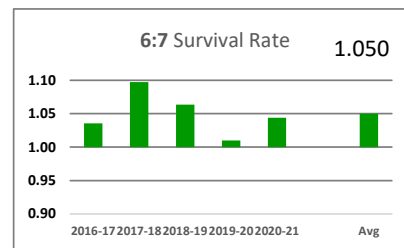
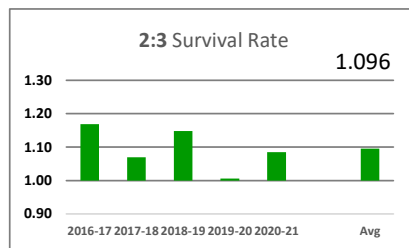
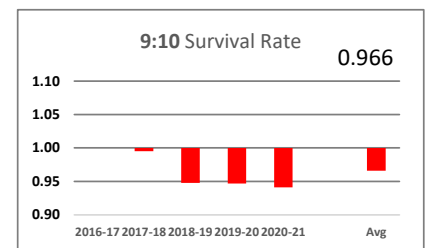
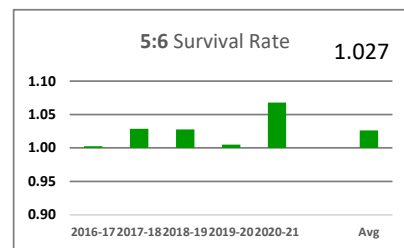
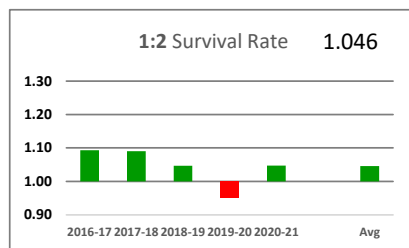
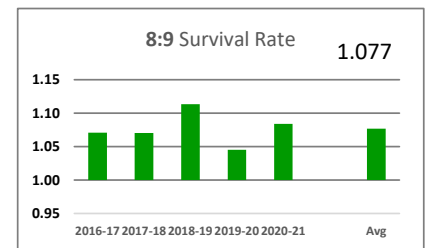
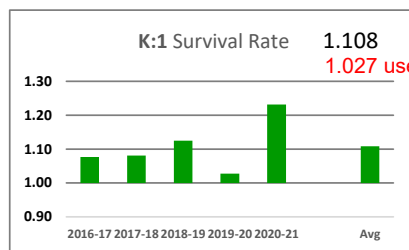


## Cohort Survival Rates Standard Projection

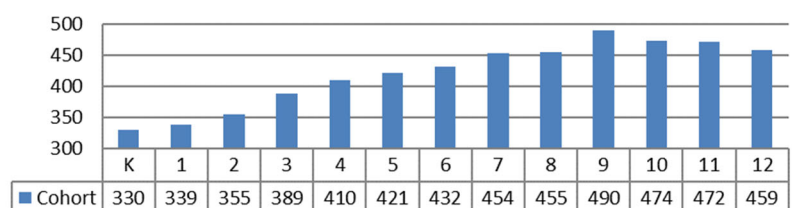


On this page are graphs of each year of each Grade Level Survival Ratio, followed by a five-year average. Red bars are a Survival Rate below 1.0 signifying loss and green bars are greater than 1.0 indicating growth. The upper right side number and far right bar is the Average. The Pandemic interruption is obvious.

The bottom graph illustrates the growth of the year 2016 Kindergarten as it grows to the 12th Grade graduating class of 2031.



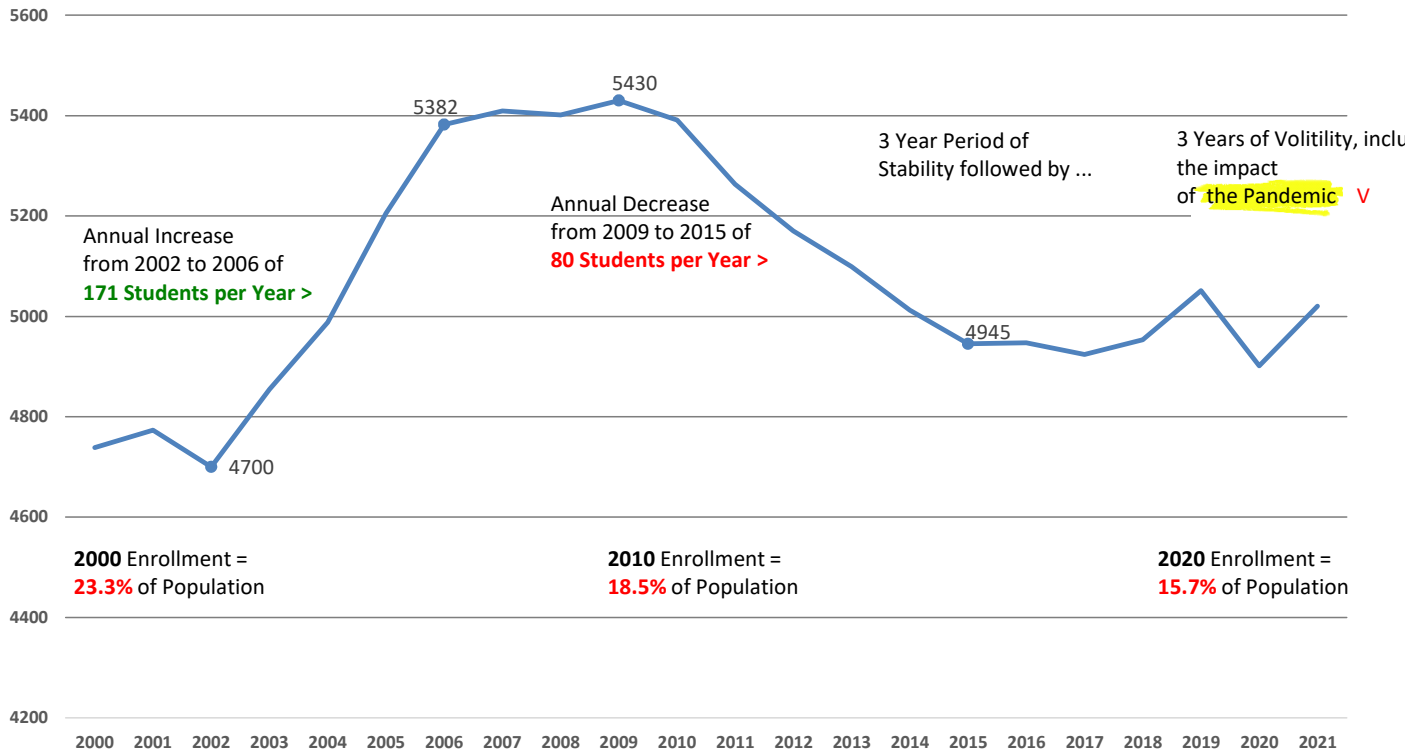
### Cohort Growth: 2019 K - 2031 Gr 12





## Actual Enrollments History 2000-2021

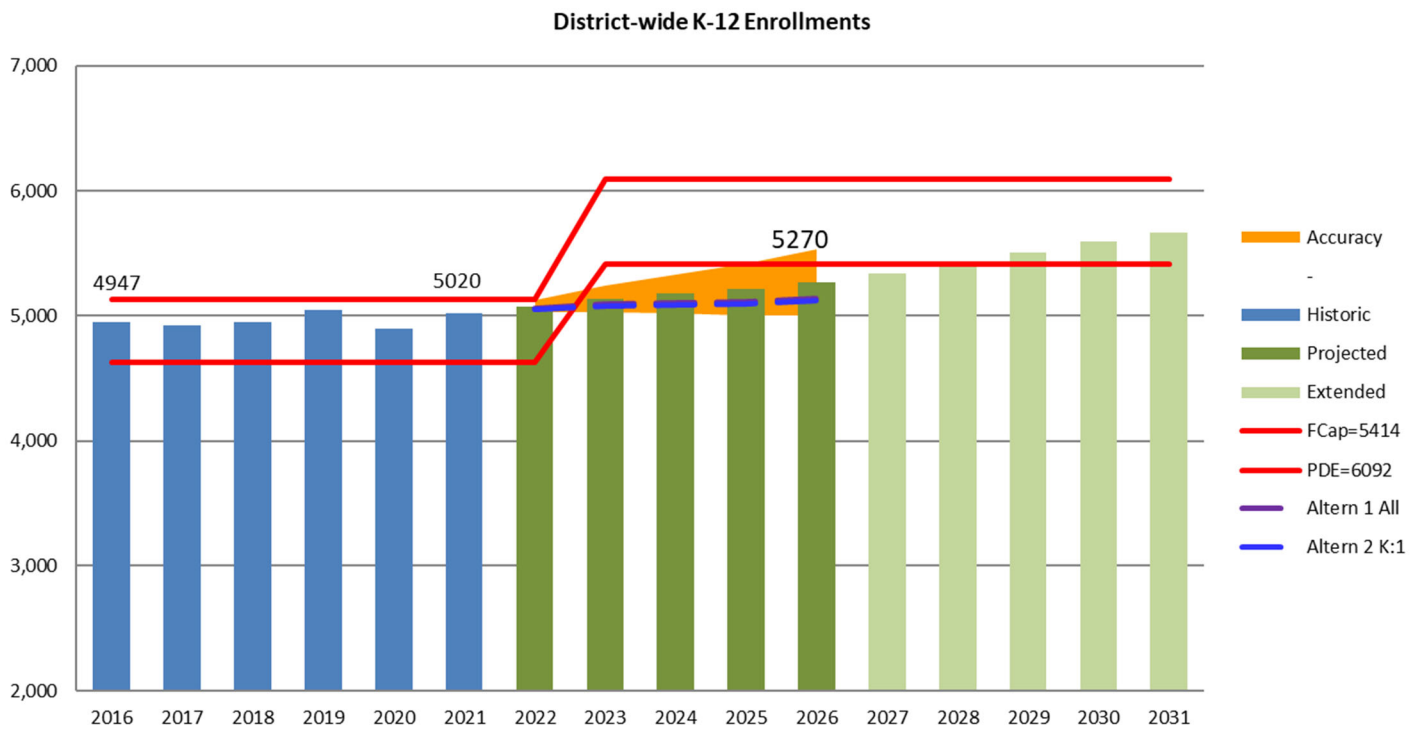
Enrollment History October 2000 to 2021



As a Percent of Population, Student Enrollment has decreased from 23.3% in year 2000 to 18.5 % in year 2010 to 15.7% in year 2020.

Annual enrollment decline was 80 students per year between 2009 and 2015. Around 2015 enrollment stabilized before entering a period of volatility associated with the Pandemic.

## Reading the Enrollment Charts



The blue bars are the 6 years of actual enrollments from Fall 2016 to Fall 2021.

The dark green bars are the resulting 1-5 year projected enrollments in the Standard Method projection.

The 6 to 10 year projections shown in light green are not considered accurate for facilities planning. Long-range projection counts range as high as  $\pm 10\%$  in accuracy in the 10th year.

The orange color is the  $\pm 1\%$  per year "Cone of Accuracy" in the first 5 years of the standard projection.

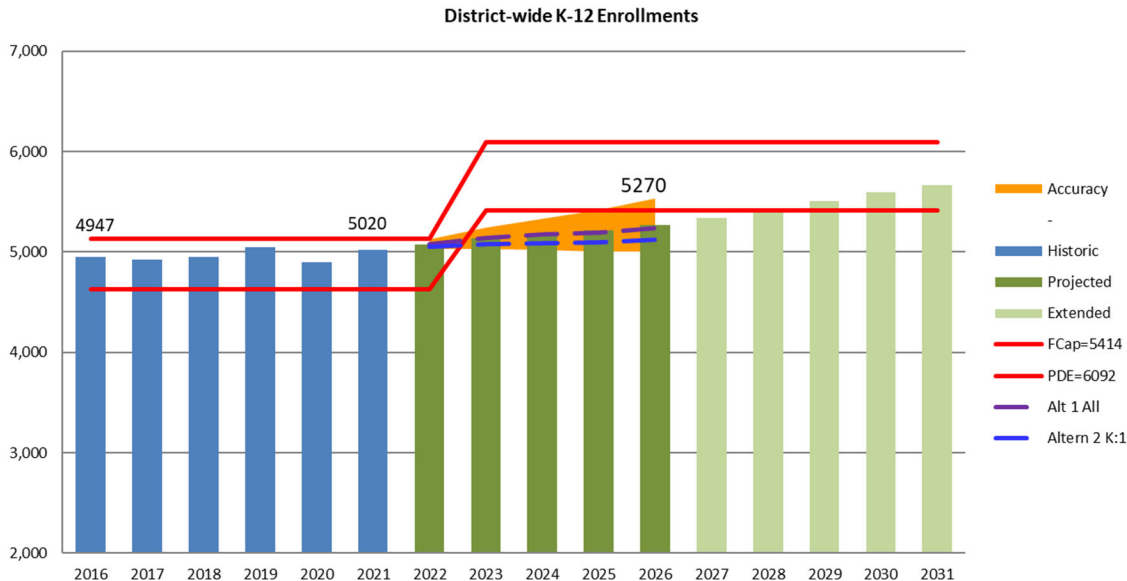
The purple (Alt 1) and blue (Alt 2) dashed lines are the alternate projections.

The red lines are the grade-level (building) capacities as determined by the District (FCap=Functional Capacity) and by the Pennsylvania Department of Education (PDE).

## District-Wide Enrollment

The 2021 enrollment is 73 students (1.5%) more than the 2016 enrollments at the beginning of the actual period having increased to 5,020 students. That growth is the equivalent of 5 to 6 students per grade.

*The District averaged 4,966 students in the actual period, and will average 5,174 in the projection period.*



Enrollments are projected to grow by 250 students to the peak year of 2026-27 where enrollments will have increased to 5,270 students (4.9%) over the end of the historic period. This is growth of nearly 20 students per grade.

District-wide enrollments exceed the Functional Capacity in only the first year of the projection until grade levels are realigned along with the opening of the new High School. PDE Capacity is never exceeded in the projection.

The Alternate 1 All Projection projects 3 additional students in 2022 to 139 fewer in 2026, an average of 87 per year fewer in the 5-year projection period or about 8 to 9 fewer per grade.

The Alternate 2 K;1 Projection also projects fewer students ranging from 28 fewer in 2022 to 148 fewer in 2026.

		TOTAL	Average	Change	%Chg	Alt 1 All	Alt 2 K;1
<b>Actual</b>	<b>2016</b>	4,947					
	<b>2017</b>	4,924					
	<b>2018</b>	4,953					
	<b>2019</b>	5,051	4,966				
	<b>2020</b>	4,901					
	<b>2021</b>	5,020		73	1.5%		
<b>Projected</b>	<b>2022</b>	5,078				5,081	3
	<b>2023</b>	5,134				5,139	5
	<b>2024</b>	5,177	5,174			5,173	-5
	<b>2025</b>	5,212				5,195	-16
	<b>2026</b>	5,270		250	4.9%	5,240	-30
<b>Extended</b>	<b>2027</b>	5,338				5,290	-48
	<b>2028</b>	5,420				5,353	-67
	<b>2029</b>	5,510	5,506			5,424	-85
	<b>2030</b>	5,597				5,493	-104
	<b>2031</b>	5,668		398	7.4%	5,560	-108
						5,344	-324



## Elementary School

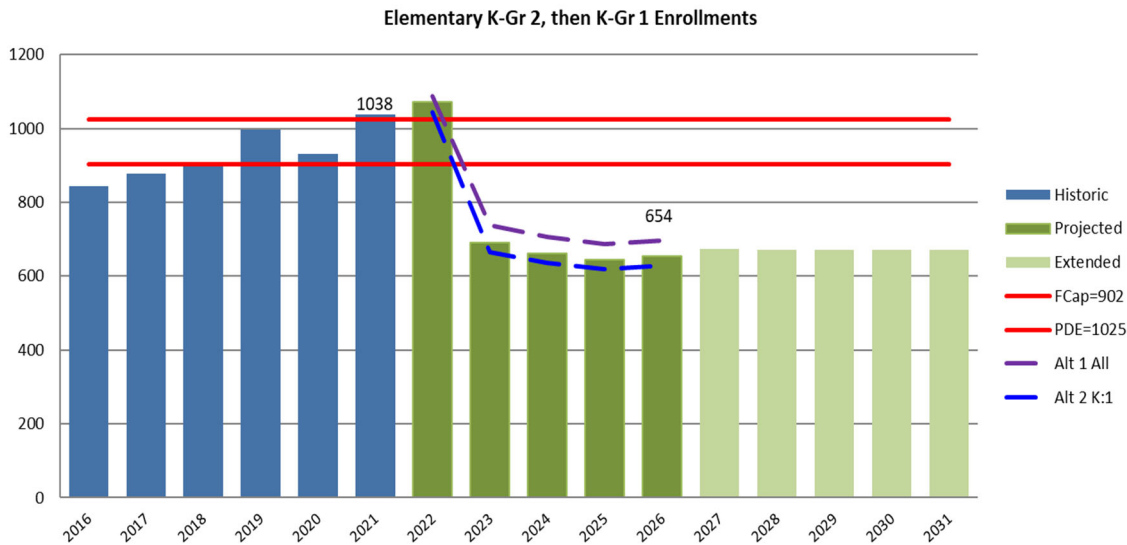
Kindergarten-Grade 2 and K-1  
Penn London Elementary School

In the actual period enrollments increased 194 students to a total of 1,038 students.

*Elementary School enrollments do not exceed capacity in any years of the projection.*

In the projection period, and due to grade realignment, enrollments will decrease in the 2nd to 5th years to an average of 745 and thereafter stabilize. The Alternate #1 All projection is 16 to 44 students higher.

The Alt #2 K:1 Projection averaged 26 fewer students or 13 per grade.



A year-to-year breakdown by grade level is as follows;

Penn London Elementary School  
Avon Grove School District  
**Elementary K-Grade 2 Enrollments**  
K-Grade 1 in Sept 2023

		K-1/2 Period to Period				Alternates			
		K	1	2	TOTAL	Average	Change	Alt 1 All	Alt 2 K:1
<b>Actual</b>	2016	247	289	308	844				
	2017	295	266	316	877				
	2018	296	319	290	905				
	2019	330	333	334	997	932			
	2020	276	339	317	932				
	2021	343	340	355	1,038		194 23.0%		
<b>Projected</b>	2022	336	380	356	1,072			1088	16 1044 -28
	2023	319	373		691			737	46 664 -27
	2024	309	353		662	745		706	44 636 -26
	2025	301	343		644			686	43 619 -25
	2026	320	334		654		-384 -35.9%	697	44 629 -24
	2027	318	354		672			717	45 647 -26
<b>Extended</b>	2028	318	353		671			715	45 645 -26
	2029	318	353		671	671		715	45 645 -26
	2030	318	353		671			715	45 645 -26
	2031	318	353		671		17 2.5%	715	45 645 -26

## Intermediate School

Grade 3-6 and 2-5

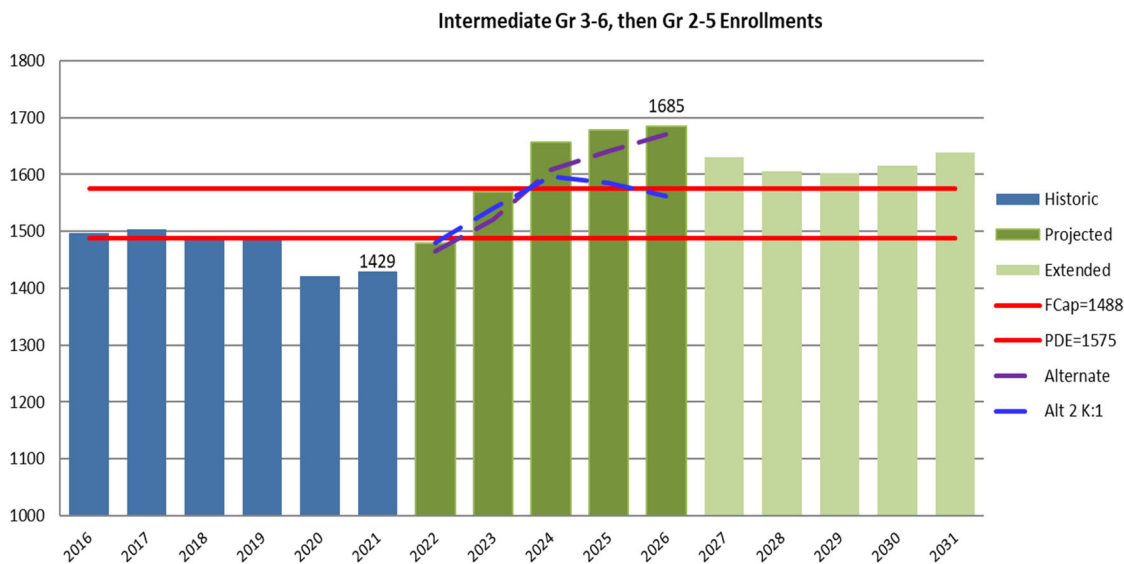
Avon Grove Intermediate School

In the historic period enrollments decreased 68 students to a total of 1,429 students.

*Intermediate School enrollments exceed capacity in the last three projection years.*

In the projection period, and following a grade realignment, enrollments will increase by 256 students to a peak of 1,685 students at the end of the projection period in year 2026-27. The Alt 1 All projection starts the projection period with 15 fewer students but averages 33 fewer students.

The Alt 2 K;1 projection starts the projection period with 0 fewer students and ends with 123 fewer students, i.e. between 30 and 31 students per grade.



Avon Grove Intermediate School

Avon Grove School District

### Intermediate Grade 3- 6 Enrollments

Grade 2-5 in Sept 2023

		K-5					PK-5	Period to Period		Alternates				
		2	3	4	5	6	SCSE	TOTAL	Average	Change	Alt 1 All	Alt 2 K:1		
Actual	2016		337	377	389	394		1,497						
	2017		360	373	381	390		1,504						
	2018		338	363	395	392		1,488						
	2019		333	360	385	406		1,484	1,471					
	2020		336	347	352	387		1,422						
	2021		344	352	357	376		1,429		-68	-4.5%			
Projected	2022		389	363	362	366		1,480			1465	-15	1480	0
	2023	398	390	410	372			1,570			1522	-48	1541	-29
	2024	390	436	411	421			1,657	1,614		1608	-49	1597	-60
	2025	370	427	459	422			1,678			1642	-36	1586	-92
	2026	358	405	450	472			1,685		256	17.3%	1670	-15	1562
Extended	2027	349	392	427	463			1,631			1649	18	1511	-119
	2028	371	383	414	438			1,605			1624	19	1488	-118
	2029	369	406	403	425			1,603	1,619		1623	19	1486	-117
	2030	369	404	428	414			1,615			1635	19	1497	-118
	2031	369	404	426	440			1,638		-47	-2.9%	1658	19	1518



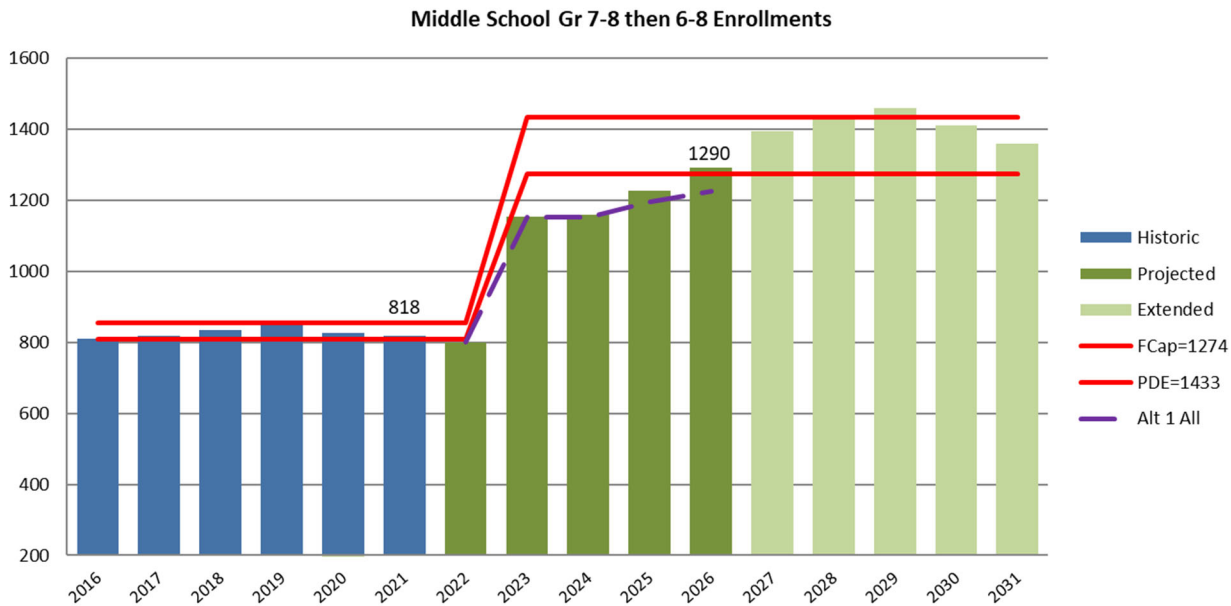
## Middle School

Grades 7-8 and 6-8  
Fred S. Engle Middle School

In the actual period enrollments increased by 46 students in year 2019 but ended the period with an increase of only 7 students by 2021.

*Middle School Enrollments do not exceed capacity in any years of the 5-year projection.*

In the projection period, following a grade level realignment, enrollments will increase by 472 students to a peak of 1,290 students at the end of the projection period in year 2026-27. The Alt 1 All projection starts the projection period with 0 fewer students and ends with 64 fewer students, i.e. an average of 21 per grade. The Alt 2 K:1 projection is not different from the standard projection until the less accurate 6 to 10 year period.



Fred S Engle Middle School  
Avon Grove School District

### Middle School Grade 7-8 Enrollments

Grade 6-8 in Sept 2023

		Gr 6/7-8			Period	Period				
		6	7	8	TOTAL	Average	Change	Alt 1 All	Alt 2 K:1	
Actual	2016		416	395	811					
	2017		408	411	819					
	2018		428	405	833					
	2019		417	440	857	827				
	2020		410	416	826					
	2021		404	414	818		7	0.9%		
Projected	2022		395	405	800			800	0	800
	2023	371	385	396	1,152			1151	-1	1152
	2024	382	390	386	1,158	1125		1152	-7	1158
	2025	432	402	391	1,225			1195	-30	1225
	2026	433	454	403	1,290		472	59.0%	-64	1290
Extended	2027	484	455	455	1,395			1293	-102	1359
	2028	475	509	456	1,440			1336	-104	1368
	2029	450	499	510	1,459	1412		1365	-93	1352
	2030	436	473	500	1,409			1340	-69	1306
	2031	425	458	474	1,357		68	4.8%	-66	1258
										-99





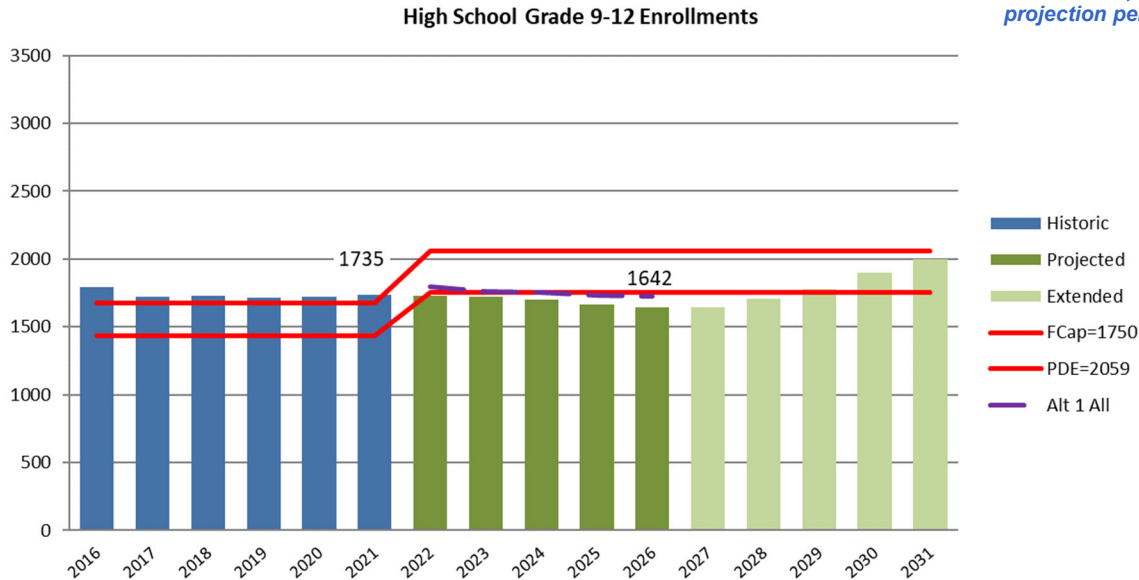
## High School Enrollment

Grade 9-12

Avon Grove High School

In the actual period enrollments decreased by 60 students ending the period by 2021 with 1,735 students.

*High School enrollments which averaged 1,736 students in the Actual period, will average a decreased 1,691 students in the projection period.*



In the projection period enrollments will continue to decrease by 93 students to a low of 1,642 students at the end of the projection period in year 2026-27.

The Alt 1 All projection starts the projection period with 72 more students and ends with 82 more students. The Alt2 K:1 projection does not differ from the standard.

*High School Enrollments do not exceed capacity in any years of the 5-year projection.*

A year-to-year breakdown by grade level is as follows;

Avon Grove School District

### High School Grade 9-12 Enrollments

							Gr 9-12	Period	Period					
		9	10	11	12	SCSE	TOTAL	Average	Change	Alt 1 All	Alt 2 K:1			
Historic	2016	435	462	443	455	0	1,795							
	2017	423	435	447	419	0	1,724							
	2018	440	421	436	430	0	1,727							
	2019	451	417	421	424	0	1,713	1736						
	2020	460	427	424	410	0	1,721							
	2021	451	433	425	426	0	1,735		-60	-3.3%				
Projected	2022	446	436	431	413	0	1,726			1798	72	1726	0	
	2023	436	431	434	419	0	1,721			1759	38	1721	0	
	2024	427	422	429	422	0	1,699	1691		1753	54	1699	0	
	2025	416	412	420	417	0	1,665			1733	68	1665	0	
	2026	421	402	411	408	0	1,642		-93	-5.4%	1724	82	1642	0
	Extended	2027	434	407	400	399	0	1,640			1693	53	1640	0
2028		490	419	405	389	0	1,704			1697	-7	1704	0	
2029		491	474	418	394	0	1,777	1805		1693	-84	1777	0	
2030		549	475	472	406	0	1,902			1733	-169	1862	-40	
2031		539	531	473	459	0	2,001		360	21.9%	1826	-175	1923	-78



## Comparative Enrollments

by Grade Level Organization  
Standard Projection

**Elementary** enrollments are at a high point at the beginning of the projection period in 2022 at 1,072 students.

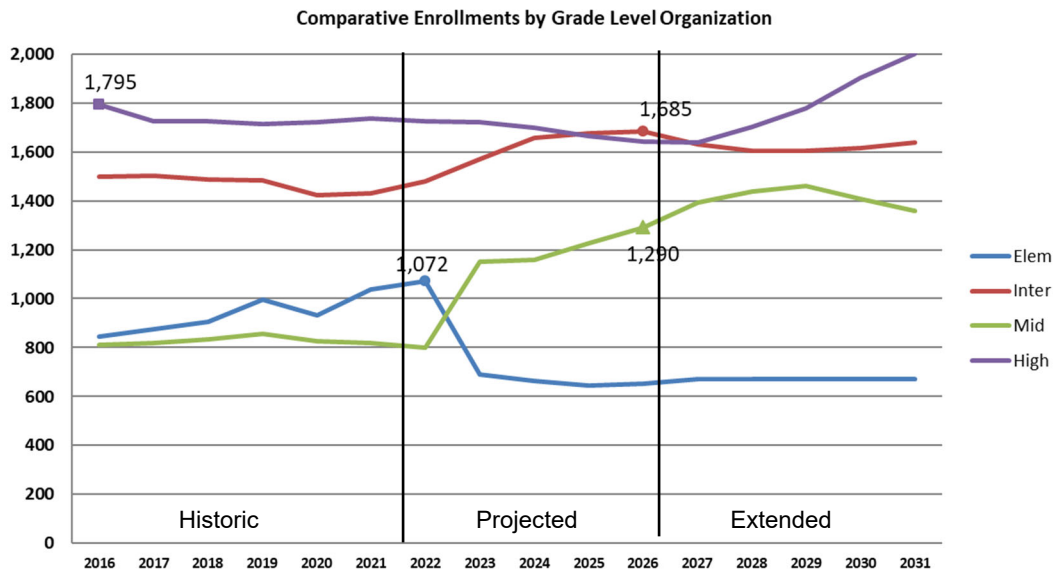
**Intermediate** enrollments are increasing throughout the 5-year projection period and peak at 1,685 students in 2026.

**Middle School** enrollments are increasing throughout the 5-year projection period and peak at 1,290 students in 2026.

**High School** enrollments are moderately decreasing for the 5-year projection period ending at 1,642 students.

*The 5-year Projection is reliable for Facilities Planning purposes.*

*Extended 6-10 year projections are not reliable for facilities planning purposes. They rely on all trends remaining the same for 10 years.*



		Elem	Inter	Mid	High	TOTAL	
<b>Actual</b>	<b>2016</b>	844	1,497	811	1,795	4,947	
	<b>2017</b>	877	1,504	819	1,724	4,924	
	<b>2018</b>	905	1,488	833	1,727	4,953	
	<b>2019</b>	997	1,484	857	1,713	5,051	
	<b>2020</b>	932	1,422	826	1,721	4,901	
	<b>2021</b>	1,038	1,429	818	1,735	5,020	
<b>Projected</b>	<b>2022</b>	1,072	1,480	800	1,726	5,078	
	<b>2023</b>	691	1,570	1,152	1,721	5,134	
	<b>2024</b>	662	1,657	1,158	1,699	5,177	
	<b>2025</b>	644	1,678	1,225	1,665	5,212	
	<b>2026</b>	654	1,685	1,290	1,642	5,270	
							HIGH
<b>Extended</b>	<b>2027</b>	672	1,631	1,395	1,640	5,338	
	<b>2028</b>	671	1,605	1,440	1,704	5,420	
	<b>2029</b>	671	1,603	1,459	1,777	5,510	
	<b>2030</b>	671	1,615	1,409	1,902	5,597	
	<b>2031</b>	671	1,638	1,357	2,001	5,668	
							LOW



**A. Cohort Survival Worksheets**

1. Standard Projection
2. Alt 2 Projection that is Adjusted "K:Gr 1" Projection, using Fall 2019 K: Gr 1 Survival Ratio
3. Charter only 3 B:K S/Rs Projection
4. Charter plus Cyber only 3 B:K S/Rs Projection
5. Adjusted "All / Combined" Projection combining District, Charter and Cyber students as base

### Standard Cohort-Survival Enrollment Projection Worksheet

DISTRICT NAME: **Avon Grove School District**

COUNTY: Chester

DATA ISSUES: Enrollments are from October 1 reports

"s" = survival rate

Births																																		
School	5 Sch Yrs.		K	1st	2nd	3rd	4th	5th	K-5	K-5	K-5	PK	PK	PK	PK-5		6th	7th	8th	6-8	6-8	6-8		9th	10th	11th	12th	9-12	9-12	9-12	PK	K-12	K-12	PK-12
			Gr.	Gr.	Gr.	Gr.	Gr.	Gr.	Subt.	SCSE	Total	SCSE	3 yrs.	4yrs.	Total		Gr.	Gr.	Gr.	Subt.	SCSE	Total		Gr.	Gr.	Gr.	Gr.	Subt.	SCSE	Total	Subt.	Subt.	Total	Total
Year	Ago	"s"	"s"	"s"	"s"	"s"	"s"	"s"		(excl. PK)						"s"	"s"	"s"					"s"	"s"	"s"	"s"				excl. SCSE w/ SCSE				

HISTORIC DATA			Half										Full										2017-2022										2020-2021										2021-2022										6 Yr Average										Survival Rate																																																																																																																																																																																																																																																																																																																																																																																																																																																																																																																																																																																																																																																																																																																																																																																																																																																																																																																																																																																	
2016-17	287	0.861	247	289	308	337	377	389	1947	0	1947	0	0	0	1947	394	416	395	1205	0	1205	394	416	395	1205	0	1205	394	416	395	1205	0	1205	394	416	395	1205	0	1205	394	416	395	1205	0	1205	394	416	395	1205	0	1205	394	416	395	1205	0	1205	394	416	395	1205	0	1205	394	416	395	1205	0	1205	394	416	395	1205	0	1205	394	416	395	1205	0	1205	394	416	395	1205	0	1205	394	416	395	1205	0	1205	394	416	395	1205	0	1205	394	416	395	1205	0	1205	394	416	395	1205	0	1205	394	416	395	1205	0	1205	394	416	395	1205	0	1205	394	416	395	1205	0	1205	394	416	395	1205	0	1205	394	416	395	1205	0	1205	394	416	395	1205	0	1205	394	416	395	1205	0	1205	394	416	395	1205	0	1205	394	416	395	1205	0	1205	394	416	395	1205	0	1205	394	416	395	1205	0	1205	394	416	395	1205	0	1205	394	416	395	1205	0	1205	394	416	395	1205	0	1205	394	416	395	1205	0	1205	394	416	395	1205	0	1205	394	416	395	1205	0	1205	394	416	395	1205	0	1205	394	416	395	1205	0	1205	394	416	395	1205	0	1205	394	416	395	1205	0	1205	394	416	395	1205	0	1205	394	416	395	1205	0	1205	394	416	395	1205	0	1205	394	416	395	1205	0	1205	394	416	395	1205	0	1205	394	416	395	1205	0	1205	394	416	395	1205	0	1205	394	416	395	1205	0	1205	394	416	395	1205	0	1205	394	416	395	1205	0	1205	394	416	395	1205	0	1205	394	416	395	1205	0	1205	394	416	395	1205	0	1205	394	416	395	1205	0	1205	394	416	395	1205	0	1205	394	416	395	1205	0	1205	394	416	395	1205	0	1205	394	416	395	1205	0	1205	394	416	395	1205	0	1205	394	416	395	1205	0	1205	394	416	395	1205	0	1205	394	416	395	1205	0	1205	394	416	395	1205	0	1205	394	416	395	1205	0	1205	394	416	395	1205	0	1205	394	416	395	1205	0	1205	394	416	395	1205	0	1205	394	416	395	1205	0	1205	394	416	395	1205	0	1205	394	416	395	1205	0	1205	394	416	395	1205	0	1205	394	416	395	1205	0	1205	394	416	395	1205	0	1205	394	416	395	1205	0	1205	394	416	395	1205	0	1205	394	416	395	1205	0	1205	394	416	395	1205	0	1205	394	416	395	1205	0	1205	394	416	395	1205	0	1205	394	416	395	1205	0	1205	394	416	395	1205	0	1205	394	416	395	1205	0	1205	394	416	395	1205	0	1205	394	416	395	1205	0	1205	394	416	395	1205	0	1205	394	416	395	1205	0	1205	394	416	395	1205	0	1205	394	416	395	1205	0	1205	394	416	395	1205	0	1205	394	416	395	1205	0	1205	394	416	395	1205	0	1205	394	416	395	1205	0	1205	394	416	395	1205	0	1205	394	416	395	1205	0	1205	394	416	395	1205	0	1205	394	416	395	1205	0	1205	394	416	395	1205	0	1205	394	416	395	1205	0	1205	394	416	395	1205	0	1205	394	416	395	1205	0	1205	394	416	395	1205	0	1205	394	416	395	1205	0	1205	394	416	395	1205	0	1205	394	416	395	1205	0	1205	394	416	395	1205	0	1205	394	416	395	1205	0	1205	394	416	395	1205	0	1205	394	416	395	1205	0	1205	394	416	395	1205	0	1205	394	416	395	1205	0	1205	394	416	395	1205	0	1205	394	416	395	1205	0	1205	394	416	395	1205	0	1205	394	416	395	1205	0	1205	394	416	395	1205	0	1205	394	416	395	1205	0	1205	394	416	395	1205	0	1205	394	416	395	1205	0	1205	394	416	395	1205	0	1205	394	416	395	1205	0	1205	394	416	395	1205	0	1205	394	416	395	1205	0	1205	394	416	395	1205	0	1205	394	416	395	1205	0	1205	394	416	395	1205	0	1205	394	416	395	1205	0	1205	394	416	395	1205	0	1205	394	416	395	1205	0	1205	394	416	395	1205	0	1205	394	416	395	1205	0	1205	394	416	395	1205	0	1205	394	416	395	1205	0	1205	394	416	395	1205	0	1205	394	416	395	1205	0	1205	394	416	395	1205	0	1205	394	416	395	1205	0	1205	394	416	395	1205	0	1205	394	416	395	1205	0	1205	394	416	395	1205	0	1205	394	416	395	1205	0	1205	394	416	395	1205	0	1205	394	416	395	1205	0	1205	394	416	395	1205	0	1205	394	416	395	1205	0	1205	394	416	395	1205	0	1205	394	416	395	1205	0	1205	394	416	395	1205	0	1205	394	416	395	1205	0	1205	394	416	395	1205	0	1205	394	416	395	1205	0	1205	394	416	395	1205	0	1205	394	416	395	1205	0	1205	394	416	395	1205	0	1205	394	416	395	1205	0	1205	394	416	395	1205	0	1205	394	416	395	1205	0	1205	394	416	395	1205	0	1205	394	416	395	1205	0	1205	394	416	395	1205	0	1205	394	416	395	1205	0	1205	394	416	395	1205	0	1205	394	416	395	1205	0	1205	394	416	395	1205	0	1205	394	416	395	1205	0	1205	394	416	395	1205	0	1205	394	416	395	1205	0	1205	394	416	395	1205	0	1205	394	416	395	1205	0	1205	394	416	395

Change # Students	144	144	144	-11	-11	-60	-60	73
-------------------	-----	-----	-----	-----	-----	-----	-----	----

Change % Students	7%	7%	7%	-1%	-1%	-3%	-3%	1%
-------------------	----	----	----	-----	-----	-----	-----	----

5-YR PROJECTIONS			1.1081.0461.0961.0541.027												366395405116701167						446436431413172601726						0507850785078												
2022-23	345	0.975	336	380	356	389	363	362	2185	0	2185	0	0	0	2185	1.027	1.050	1.003	371	385	396	1152	0	1152	1.077	0.966	0.996	0.972	436	431	434	419	1721	0	1721	0	5134	5134	5134
2023-24	327	0.975	319	373	398	390	410	372	2261	0	2261	0	0	0	2261	1.108	1.050	1.003	371	385	396	1152	0	1152	1.077	0.966	0.996	0.972	436	431	434	419	1721	0	1721	0	5134	5134	5134
2024-25	317	0.975	309	353	390	436	411	421	2320	0	2320	0	0	0	2320	1.108	1.050	1.003	382	390	386	1158	0	1158	1.077	0.966	0.996	0.972	427	422	429	422	1699	0	1699	0	5177	5177	5177
2025-26	309	0.975	301	343	370	427	459	422	2322	0	2322	0	0	0	2322	1.108	1.050	1.003	432	402	391	1225	0	1225	1.077	0.966	0.996	0.972	416	412	420	417	1665	0	1665	0	5212	5212	5212
2026-27	328	0.975	320	334	358	405	450	472	2339	0	2339	0	0	0	2339	1.108	1.050	1.003	433	454	403	1290	0	1290	1.077	0.966	0.996	0.972	421	402	411	408	1642	0	1642	0	5270	5270	5270

Change # Students	248	248	248	96	96	-93	-93	250
-------------------	-----	-----	-----	----	----	-----	-----	-----

Change % Students	12%	12%	12%	8%	8%	-5%	-5%	5.0%
-------------------	-----	-----	-----	----	----	-----	-----	------

### KEY to Number Colors

- 99 Standard number with no modifications to methodology
- 99 Provisional, but uncertified births from the NJ Department of Health
- 99 Births projected as an average of the prior 6 years, including provisional data...and projected students resulting from this "less accurate" average
- 99 Students per Grade Level added for residential development

The above information is prepared and certified by a qualified demographer.

Firm Name: Sundance Associates 117 Greenvale Ct. Cherry Hill NJ 08034

Name: George B. Sundell Tel 856-755-0174 Email: GSundell@sundanceassoc.com

Signature: George D. Justice Date: November 15, 2021

[illegible]

Change # Students	-30	-30	-30	68	68	360	360	398
-------------------	-----	-----	-----	----	----	-----	-----	-----

Change % Students	-1%	-1%	-1%	5%	5%	18%	18%	7%
-------------------	-----	-----	-----	----	----	-----	-----	----

### Standard Cohort-Survival Enrollment Projection Worksheet

DISTRICT NAME: **Avon Grove School District**

Alt 2 : Adjusted B:K Survival Rate

COUNTY: Chester

DATA ISSUES:	Enrollments are from October 1 reports
--------------	--

"s" = survival rate

[illegible]

HISTORIC DATA			Half										Both										Full																																																																																																																																																																																																																																																																																																																																																																																																																																																																																																																																																																																																																																																																																																																																																																																																																																																																																																																																																																																																																																																																																																																																																																																																																																																																																																																																																																																																																																
---------------	--	--	------	--	--	--	--	--	--	--	--	--	------	--	--	--	--	--	--	--	--	--	------	--	--	--	--	--	--	--	--	--	--	--	--	--	--	--	--	--	--	--	--	--	--	--	--	--	--	--	--	--	--	--	--	--	--	--	--	--	--	--	--	--	--	--	--	--	--	--	--	--	--	--	--	--	--	--	--	--	--	--	--	--	--	--	--	--	--	--	--	--	--	--	--	--	--	--	--	--	--	--	--	--	--	--	--	--	--	--	--	--	--	--	--	--	--	--	--	--	--	--	--	--	--	--	--	--	--	--	--	--	--	--	--	--	--	--	--	--	--	--	--	--	--	--	--	--	--	--	--	--	--	--	--	--	--	--	--	--	--	--	--	--	--	--	--	--	--	--	--	--	--	--	--	--	--	--	--	--	--	--	--	--	--	--	--	--	--	--	--	--	--	--	--	--	--	--	--	--	--	--	--	--	--	--	--	--	--	--	--	--	--	--	--	--	--	--	--	--	--	--	--	--	--	--	--	--	--	--	--	--	--	--	--	--	--	--	--	--	--	--	--	--	--	--	--	--	--	--	--	--	--	--	--	--	--	--	--	--	--	--	--	--	--	--	--	--	--	--	--	--	--	--	--	--	--	--	--	--	--	--	--	--	--	--	--	--	--	--	--	--	--	--	--	--	--	--	--	--	--	--	--	--	--	--	--	--	--	--	--	--	--	--	--	--	--	--	--	--	--	--	--	--	--	--	--	--	--	--	--	--	--	--	--	--	--	--	--	--	--	--	--	--	--	--	--	--	--	--	--	--	--	--	--	--	--	--	--	--	--	--	--	--	--	--	--	--	--	--	--	--	--	--	--	--	--	--	--	--	--	--	--	--	--	--	--	--	--	--	--	--	--	--	--	--	--	--	--	--	--	--	--	--	--	--	--	--	--	--	--	--	--	--	--	--	--	--	--	--	--	--	--	--	--	--	--	--	--	--	--	--	--	--	--	--	--	--	--	--	--	--	--	--	--	--	--	--	--	--	--	--	--	--	--	--	--	--	--	--	--	--	--	--	--	--	--	--	--	--	--	--	--	--	--	--	--	--	--	--	--	--	--	--	--	--	--	--	--	--	--	--	--	--	--	--	--	--	--	--	--	--	--	--	--	--	--	--	--	--	--	--	--	--	--	--	--	--	--	--	--	--	--	--	--	--	--	--	--	--	--	--	--	--	--	--	--	--	--	--	--	--	--	--	--	--	--	--	--	--	--	--	--	--	--	--	--	--	--	--	--	--	--	--	--	--	--	--	--	--	--	--	--	--	--	--	--	--	--	--	--	--	--	--	--	--	--	--	--	--	--	--	--	--	--	--	--	--	--	--	--	--	--	--	--	--	--	--	--	--	--	--	--	--	--	--	--	--	--	--	--	--	--	--	--	--	--	--	--	--	--	--	--	--	--	--	--	--	--	--	--	--	--	--	--	--	--	--	--	--	--	--	--	--	--	--	--	--	--	--	--	--	--	--	--	--	--	--	--	--	--	--	--	--	--	--	--	--	--	--	--	--	--	--	--	--	--	--	--	--	--	--	--	--	--	--	--	--	--	--	--	--	--	--	--	--	--	--	--	--	--	--	--	--	--	--	--	--	--	--	--	--	--	--	--	--	--	--	--	--	--	--	--	--	--	--	--	--	--	--	--	--	--	--	--	--	--	--	--	--	--	--	--	--	--	--	--	--	--	--	--	--	--	--	--	--	--	--	--	--	--	--	--	--	--	--	--	--	--	--	--	--	--	--	--	--	--	--	--	--	--	--	--	--	--	--	--	--	--	--	--	--	--	--	--	--	--	--	--	--	--	--	--	--	--	--	--	--	--	--	--	--	--	--	--	--	--	--	--	--	--	--	--	--	--	--	--	--	--	--	--	--	--	--	--	--	--	--	--	--	--	--	--	--	--	--	--	--	--	--	--	--	--	--	--	--	--	--	--	--	--	--	--	--	--	--	--	--	--	--	--	--	--	--	--	--	--	--	--	--	--	--	--	--	--	--	--	--	--	--	--	--	--	--	--	--	--	--	--	--	--	--	--	--	--	--	--	--	--	--	--	--	--	--	--	--	--	--	--	--	--	--	--	--	--	--	--	--	--	--	--	--	--	--	--	--	--	--	--	--	--	--	--	--	--	--	--	--	--	--	--	--	--	--	--	--	--	--	--	--	--	--	--	--	--	--	--	--	--	--	--	--	--	--	--	--	--	--	--	--	--	--	--	--	--	--	--	--	--	--	--	--	--	--	--	--	--	--	--	--	--	--	--	--	--	--	--	--	--	--	--	--	--	--	--	--	--	--	--	--	--	--	--	--	--	--	--	--	--	--	--	--	--	--	--	--	--	--	--	--	--	--	--	--	--	--	--	--	--	--	--	--	--	--	--	--	--	--	--	--	--	--	--	--	--	--	--	--	--	--	--	--	--	--	--	--	--	--	--	--	--	--	--	--	--	--	--	--	--	--	--	--	--	--	--	--	--	--	--	--	--	--	--	--	--	--	--	--	--	--	--	--	--	--	--	--	--	--	--	--	--	--	--	--	--	--	--	--	--	--	--	--	--	--	--	--	--	--	--	--	--	--	--	--	--	--	--	--	--	--	--	--	--	--	--	--	--	--	--	--	--	--	--	--	--	--	--	--	--	--	--	--	--	--	--	--	--	--	--	--	--	--	--	--	--	--	--	--	--	--	--	--	--	--	--	--	--	--	--	--	--	--	--	--	--	--	--	--	--	--	--	--	--	--	--	--	--	--	--	--	--	--	--	--	--	--	--	--	--	--	--	--	--	--	--	--	--	--	--	--	--	--	--	--	--	--	--	--	--	--	--	--	--	--	--	--	--	--	--	--	--	--	--	--	--	--	--	--	--	--	--	--	--	--	--	--	--	--	--	--	--	--	--	--	--	--	--	--	--	--	--	--	--	--	--	--	--	--	--	--	--	--	--	--	--	--	--	--	--	--	--	--	--	--	--	--	--	--	--	--	--	--	--	--	--	--	--	--	--	--	--	--	--	--	--	--	--	--	--	--	--	--	--	--	--	--	--	--	--	--	--	--	--	--	--	--	--	--	--	--	--	--	--	--	--	--	--	--	--	--	--	--	--	--	--	--	--	--	--	--	--	--	--	--	--	--	--	--	--

Change # Students	144	144	144	-11	-11	-60	-60	73
-------------------	-----	-----	-----	-----	-----	-----	-----	----

Change % Students	7%	7%	7%	-1%	-1%	-3%	-3%	1%
-------------------	----	----	----	-----	-----	-----	-----	----

[illegible]

Change # Students	100	100	100	96	96	-93	-93	103
-------------------	-----	-----	-----	----	----	-----	-----	-----

Change % Students	5%	5%	5%	8%	8%	-5%	-5%	2.0%
-------------------	----	----	----	----	----	-----	-----	------

### KEY to Number Colors

- |    |  |
|----|--|
| 99 | Standard number with no modifications to methodology   |
| 99 | Provisional, but uncertified births from the NJ Department of Health   |
| 99 | Births projected as an average of the prior 6 years, including provisional data...and projected students resulting from this "less accurate" average |
| 99 | Students per Grade Level added for residential development   |

**The above information is prepared and certified by a qualified demographer.**

Firm Name: Sundance Associates 117 Greenvale Ct. Cherry Hill NJ 08034

Name: George B. Sundell Tel 856-755-0174 Email: GSundell@sundanceassoc.com

Signature: George F. Jankin Date: November 15, 2021

[illegible]

Change # Students	-28	-28	-28	-32	-32	281	281	222
-------------------	-----	-----	-----	-----	-----	-----	-----	-----

Change % Students	-1%	-1%	-1%	-3%	-3%	15%	15%	4%
-------------------	-----	-----	-----	-----	-----	-----	-----	----

## Standard Cohort-Survival Enrollment Projection Worksheet

DISTRICT NAME: **Avon Grove Charter School**

used Cyber 2 that combines Charter and Cyber for Alt 1

COUNTY: Chester

DATA ISSUES: Enrollments are from October 1 reports

"s" = survival rate

[illegible]

HISTORIC DATA																																																																																																																																																																																																																																																																																																																																																																																																																																																																																																																																																																																																																											
---------------	--	--	--	--	--	--	--	--	--	--	--	--	--	--	--	--	--	--	--	--	--	--	--	--	--	--	--	--	--	--	--	--	--	--	--	--	--	--	--	--	--	--	--	--	--	--	--	--	--	--	--	--	--	--	--	--	--	--	--	--	--	--	--	--	--	--	--	--	--	--	--	--	--	--	--	--	--	--	--	--	--	--	--	--	--	--	--	--	--	--	--	--	--	--	--	--	--	--	--	--	--	--	--	--	--	--	--	--	--	--	--	--	--	--	--	--	--	--	--	--	--	--	--	--	--	--	--	--	--	--	--	--	--	--	--	--	--	--	--	--	--	--	--	--	--	--	--	--	--	--	--	--	--	--	--	--	--	--	--	--	--	--	--	--	--	--	--	--	--	--	--	--	--	--	--	--	--	--	--	--	--	--	--	--	--	--	--	--	--	--	--	--	--	--	--	--	--	--	--	--	--	--	--	--	--	--	--	--	--	--	--	--	--	--	--	--	--	--	--	--	--	--	--	--	--	--	--	--	--	--	--	--	--	--	--	--	--	--	--	--	--	--	--	--	--	--	--	--	--	--	--	--	--	--	--	--	--	--	--	--	--	--	--	--	--	--	--	--	--	--	--	--	--	--	--	--	--	--	--	--	--	--	--	--	--	--	--	--	--	--	--	--	--	--	--	--	--	--	--	--	--	--	--	--	--	--	--	--	--	--	--	--	--	--	--	--	--	--	--	--	--	--	--	--	--	--	--	--	--	--	--	--	--	--	--	--	--	--	--	--	--	--	--	--	--	--	--	--	--	--	--	--	--	--	--	--	--	--	--	--	--	--	--	--	--	--	--	--	--	--	--	--	--	--	--	--	--	--	--	--	--	--	--	--	--	--	--	--	--	--	--	--	--	--	--	--	--	--	--	--	--	--	--	--	--	--	--	--	--	--	--	--	--	--	--	--	--	--	--	--	--	--	--	--	--	--	--	--	--	--	--	--	--	--	--	--	--	--	--	--	--	--	--	--	--	--	--	--	--	--	--	--	--	--	--	--	--	--	--	--	--	--	--	--	--	--	--	--	--	--	--	--	--	--	--	--	--	--	--	--	--	--	--	--	--	--	--	--	--	--	--	--	--	--	--	--	--	--	--	--	--	--	--	--	--	--	--	--	--	--	--	--	--	--	--	--	--	--	--	--	--	--	--	--	--	--	--	--	--	--	--	--	--	--	--	--	--	--	--	--	--	--	--	--	--	--	--	--	--	--	--	--	--	--	--	--	--	--	--	--	--	--	--	--	--	--	--	--	--	--	--	--	--	--	--	--	--	--	--	--	--	--	--	--	--	--	--	--	--	--	--	--	--	--	--	--	--	--	--	--	--	--	--

Change # Students	-213	-213	-213	35	35	47	47	-131
-------------------	------	------	------	----	----	----	----	------

Change % Students	-39%	-39%	-39%	25%	25%	47%	47%	-17%
-------------------	------	------	------	-----	-----	-----	-----	------

5-YR PROJECTIONS			0.9290.9580.8150.8240.984												0.9480.8630.960						0.8050.8760.9611.002						0.8050.8760.9611.002						0.8050.8760.9611.002						0.8050.8760.9611.002						0.8050.8760.9611.002						0.8050.8760.9611.002						0.8050.8760.9611.002						0.8050.8760.9611.002						0.8050.8760.9611.002						0.8050.8760.9611.002						0.8050.8760.9611.002						0.8050.8760.9611.002						0.8050.8760.9611.002						0.8050.8760.9611.002						0.8050.8760.9611.002						0.8050.8760.9611.002						0.8050.8760.9611.002						0.8050.8760.9611.002						0.8050.8760.9611.002						0.8050.8760.9611.002						0.8050.8760.9611.002						0.8050.8760.9611.002						0.8050.8760.9611.002						0.8050.8760.9611.002						0.8050.8760.9611.002						0.8050.8760.9611.002						0.8050.8760.9611.002						0.8050.8760.9611.002						0.8050.8760.9611.002						0.8050.8760.9611.002						0.8050.8760.9611.002						0.8050.8760.9611.002						0.8050.8760.9611.002						0.8050.8760.9611.002						0.8050.8760.9611.002						0.8050.8760.9611.002						0.8050.8760.9611.002						0.8050.8760.9611.002						0.8050.8760.9611.002						0.8050.8760.9611.002						0.8050.8760.9611.002						0.8050.8760.9611.002						0.8050.8760.9611.002						0.8050.8760.9611.002						0.8050.8760.9611.002						0.8050.8760.9611.002						0.8050.8760.9611.002						0.8050.8760.9611.002						0.8050.8760.9611.002						0.8050.8760.9611.002						0.8050.8760.9611.002						0.8050.8760.9611.002						0.8050.8760.9611.002						0.8050.8760.9611.002						0.8050.8760.9611.002						0.8050.8760.9611.002						0.8050.8760.9611.002						0.8050.8760.9611.002						0.8050.8760.9611.002						0.8050.8760.9611.002						0.8050.8760.9611.002						0.8050.8760.9611.002						0.8050.8760.9611.002						0.8050.8760.9611.002						0.8050.8760.9611.002						0.8050.8760.9611.002						0.8050.8760.9611.002						0.8050.8760.9611.002						0.8050.8760.9611.002						0.8050.8760.9611.002						0.8050.8760.9611.002						0.8050.8760.9611.002						0.8050.8760.9611.002						0.8050.8760.9611.002						0.8050.8760.9611.002						0.8050.8760.9611.002						0.8050.8760.9611.002						0.8050.8760.9611.002						0.8050.8760.9611.002						0.8050.8760.9611.002						0.8050.8760.9611.002						0.8050.8760.9611.002						0.8050.8760.9611.002						0.8050.8760.9611.002						0.8050.8760.9611.002						0.8050.8760.9611.002						0.8050.8760.9611.002						0.8050.8760.9611.002						0.8050.8760.9611.002						0.8050.8760.9611.002						0.8050.8760.9611.002						0.8050.8760.9611.002						0.8050.8760.9611.002						0.8050.8760.9611.002						0.8050.8760.9611.002						0.8050.8760.9611.002						0.8050.8760.9611.002						0.8050.8760.9611.002						0.8050.8760.9611.002						0.8050.8760.9611.002						0.8050.8760.9611.002						0.8050.8760.9611.002						0.8050.8760.9611.002						0.8050.8760.9611.002						0.8050.8760.9611.002						0.8050.8760.9611.002						0.8050.8760.9611.002						0.8050.8760.9611.002						0.8050.8760.9611.002						0.8050.8760.9611.002						0.8050.8760.9611.002						0.8050.8760.9611.002						0.8050.8760.9611.002						0.8050.8760.9611.002						0.8050.8760.9611.002						0.8050.8760.9611.002						0.8050.8760.9611.002						0.8050.8760.9611.002						0.8050.8760.9611.002						0.8050.8760.9611.002						0.8050.8760.9611.002						0.8050.8760.9611.002						0.8050.8760.9611.002						0.8050.8760.9611.002						0.8050.8760.9611.002						0.8050.8760.9611.002						0.8050.8760.9611.002						0.8050.8760.9611.002						0.8050.8760.9611.002						0.8050.8760.9611.002						0.8050.8760.9611.002						0.8050.8760.9611.002						0.8050.8760.9611.002						0.8050.8760.9611.002						0.8050.8760.9611.002						0.8050.8760.9611.002						0.8050.8760.9611.002						0.8050.8760.9611.002						0.8050.8760.9611.002						0.8050.8760.9611.002						0.8050.8760.9611.002						0.8050.8760.9611.002						0.8050.8760.9611.002						0.8050.8760.9611.002						0.8050.8760.9611.002						0.8050.8760.9611.002						0.8050.8760.9611.002						0.8050.8760.9611.002						0.8050.8760.9611.002						0.8050.8760.9611.002						0.8050.8760.9611.002						0.8050.8760.9611.002						0.8050.8760.9611.002						0.8050.8760.9611.002						0.8050.8760.9611.002						0.8050.8760.9611.002						0.8050.8760.9611.002						0.8050.8760.9611.002						0.8050.8760.9611.002						0.8050.8760.9611.002						0.8050.8760.9611.002						0.8050.8760.9611.002						0.8050.8760.9611.002						0.8050.8760.9611.002						0.8050.8760.9611.002						0.8050.8760.9611.002						0.8050.8760.9611.002						0.8050.8760.9611.002						0.8050.8760.9611.002						0.8050.8760.9611.002						0.8050.8760.9611.002						0.8050.8760.9611.002						0.8050.8760.9611.002						0.8050.8760.9611.002						0.8050.8760.9611.002						0.8050.8760.9611.002						0.8050.8760.9611.002						0.8050.8760.9611.002						0.8050.8760.9611.002						0.8050.8760.9611.002						0.8050.8760.9611.002						0.8050.8760.9611.002						0.8050.8760.9611.002						0.8050.8760.9611.002						0.8050.8760.9611.002						0.8050.8760.9611.002						0.8050.8760.9611.002						0.8050.8760.9611.002						0.8050.8760.9611.002						0.8050.8760.9611.002						0.8050.8760.9611.002						0.8050.8760.9611.002						0.8050.8760.9611.002						0.8050.8760.9611.002						0.8050.8760.9611.002						0.8050.8760.9611.002						0.8050.8760.9611.002						0.8050.8760.9611.002						0.8050.8760.9611.002						0.8050.8760.9611.002						0.8050.8760.9611.002						0.8050.8760.9611.002						0.8050.8760.9611.002						0.8050.8760.9611.002						0.8050.8760.9611.002						0.8050.8760.9611.002						0.8050.8760.9611.002						0.8050.8760.9611.002						0.8050.8760.9611.002						0.8050.8760.9611.002						0.8050.8760.9611.002						0.8050.8760.9611.002						0.8050.8760.9611.002						0.8050.8760.9611.002						0.8050.8760.9611.002						0.8050.8760.9611.002						0.8050.8760.9611.002						0.8050.8760.9611.002						0.8050.8760.9611.002						0.8050.8760.9611.002						0.8050.8760.9611.002						0.8050.8760.9611.002						0.8050.8760.9611.002						0.8050.8760.9611.002						0.8050.8760.9611.002						0.8050.8760.9611.002						0.8050.8760.9611.002						0.8050.8760.9611.002						0.8050.8760.9611.002						0.8050.8760.9611.002						0.8050.8760.9611.002						0.8050.8760.9611.002						0.8050.8760.9611.002						0.8050.8760.9611.002						0.8050.8760.9611.002						0.8050.8760.9611.002						0.8050.8760.9611.002						0.8050.8760.9611.002						0.8050.8760.9611.002						0.8050.8760.9611.002						0.8050.8760.9611.002						0.8050.8760.9611.002						0.8050.8760.9611.002						0.8050.8760.9611.002						0.8050.8760.9611.002						0.8050.8760.9611.002						0.8050.8760.9611.002						0.8050.8760.9611.002						0.8050.8760.9611.002						0.8050.8760.9611.002						0.8050.8760.9611.002						0.8050.8760.9611.002						0.8050.8760.9611.002						0.8050.8760.9611.002						0.8050.8760.9611.002						0.8050.8760.9611.002						0.8050.8760.9611.002						0.8050.8760.9611.002						0.8050.8760.9611.002						0.8050.8760.9611.002						0.8050.8760.9611.002						0.8050.8760.9611.002						0.8050.8760.9611.002						0.8050.8760.9611.002						0.8050.8760.9611.002						0.8050.8760.9611.002						0.8050.8760.9611.002						0.8050.8760.9611.002						0.8050.8760.9611.002						0.8050.8760.9611.002						0.8050.8760.9611.002						0.8050.8760.9611.002						0.8050.8760.9611.002						0.8050.8760.9611.002						0.8050.8760.9611.002						0.8050.8760.9611.002						0.8050.8760.9611.002						0.8050.8760.9611.002						0.8050.8760.9611.002						0.8050.8760.9611.002						0.8050.8760.9611.002						0.8050.8760.9611.002						0.8050.8760.9611.002						0.8050.8760.9611.002						0.8050.8760.9611.002						0.8050.8760.9611.002						0.8050.8760.9611.002						0.8050.8760.9611.002						0.8050.8760.9611.002						0.8050.8760.9611.002						0.8050.8760.9611.002						0.8050.8760.9611.002						0.8050.8760.9611.002						0.8050.8760.9611.002						0.8050.8760.9611.002						0.8050.8760.9611.002						0.8050.8760.9611.002						0.8050.8760.9611.002						0.80					
------------------	--	--	---------------------------	--	--	--	--	--	--	--	--	--	--	--	-----------------	--	--	--	--	--	----------------------	--	--	--	--	--	----------------------	--	--	--	--	--	----------------------	--	--	--	--	--	----------------------	--	--	--	--	--	----------------------	--	--	--	--	--	----------------------	--	--	--	--	--	----------------------	--	--	--	--	--	----------------------	--	--	--	--	--	----------------------	--	--	--	--	--	----------------------	--	--	--	--	--	----------------------	--	--	--	--	--	----------------------	--	--	--	--	--	----------------------	--	--	--	--	--	----------------------	--	--	--	--	--	----------------------	--	--	--	--	--	----------------------	--	--	--	--	--	----------------------	--	--	--	--	--	----------------------	--	--	--	--	--	----------------------	--	--	--	--	--	----------------------	--	--	--	--	--	----------------------	--	--	--	--	--	----------------------	--	--	--	--	--	----------------------	--	--	--	--	--	----------------------	--	--	--	--	--	----------------------	--	--	--	--	--	----------------------	--	--	--	--	--	----------------------	--	--	--	--	--	----------------------	--	--	--	--	--	----------------------	--	--	--	--	--	----------------------	--	--	--	--	--	----------------------	--	--	--	--	--	----------------------	--	--	--	--	--	----------------------	--	--	--	--	--	----------------------	--	--	--	--	--	----------------------	--	--	--	--	--	----------------------	--	--	--	--	--	----------------------	--	--	--	--	--	----------------------	--	--	--	--	--	----------------------	--	--	--	--	--	----------------------	--	--	--	--	--	----------------------	--	--	--	--	--	----------------------	--	--	--	--	--	----------------------	--	--	--	--	--	----------------------	--	--	--	--	--	----------------------	--	--	--	--	--	----------------------	--	--	--	--	--	----------------------	--	--	--	--	--	----------------------	--	--	--	--	--	----------------------	--	--	--	--	--	----------------------	--	--	--	--	--	----------------------	--	--	--	--	--	----------------------	--	--	--	--	--	----------------------	--	--	--	--	--	----------------------	--	--	--	--	--	----------------------	--	--	--	--	--	----------------------	--	--	--	--	--	----------------------	--	--	--	--	--	----------------------	--	--	--	--	--	----------------------	--	--	--	--	--	----------------------	--	--	--	--	--	----------------------	--	--	--	--	--	----------------------	--	--	--	--	--	----------------------	--	--	--	--	--	----------------------	--	--	--	--	--	----------------------	--	--	--	--	--	----------------------	--	--	--	--	--	----------------------	--	--	--	--	--	----------------------	--	--	--	--	--	----------------------	--	--	--	--	--	----------------------	--	--	--	--	--	----------------------	--	--	--	--	--	----------------------	--	--	--	--	--	----------------------	--	--	--	--	--	----------------------	--	--	--	--	--	----------------------	--	--	--	--	--	----------------------	--	--	--	--	--	----------------------	--	--	--	--	--	----------------------	--	--	--	--	--	----------------------	--	--	--	--	--	----------------------	--	--	--	--	--	----------------------	--	--	--	--	--	----------------------	--	--	--	--	--	----------------------	--	--	--	--	--	----------------------	--	--	--	--	--	----------------------	--	--	--	--	--	----------------------	--	--	--	--	--	----------------------	--	--	--	--	--	----------------------	--	--	--	--	--	----------------------	--	--	--	--	--	----------------------	--	--	--	--	--	----------------------	--	--	--	--	--	----------------------	--	--	--	--	--	----------------------	--	--	--	--	--	----------------------	--	--	--	--	--	----------------------	--	--	--	--	--	----------------------	--	--	--	--	--	----------------------	--	--	--	--	--	----------------------	--	--	--	--	--	----------------------	--	--	--	--	--	----------------------	--	--	--	--	--	----------------------	--	--	--	--	--	----------------------	--	--	--	--	--	----------------------	--	--	--	--	--	----------------------	--	--	--	--	--	----------------------	--	--	--	--	--	----------------------	--	--	--	--	--	----------------------	--	--	--	--	--	----------------------	--	--	--	--	--	----------------------	--	--	--	--	--	----------------------	--	--	--	--	--	----------------------	--	--	--	--	--	----------------------	--	--	--	--	--	----------------------	--	--	--	--	--	----------------------	--	--	--	--	--	----------------------	--	--	--	--	--	----------------------	--	--	--	--	--	----------------------	--	--	--	--	--	----------------------	--	--	--	--	--	----------------------	--	--	--	--	--	----------------------	--	--	--	--	--	----------------------	--	--	--	--	--	----------------------	--	--	--	--	--	----------------------	--	--	--	--	--	----------------------	--	--	--	--	--	----------------------	--	--	--	--	--	----------------------	--	--	--	--	--	----------------------	--	--	--	--	--	----------------------	--	--	--	--	--	----------------------	--	--	--	--	--	----------------------	--	--	--	--	--	----------------------	--	--	--	--	--	----------------------	--	--	--	--	--	----------------------	--	--	--	--	--	----------------------	--	--	--	--	--	----------------------	--	--	--	--	--	----------------------	--	--	--	--	--	----------------------	--	--	--	--	--	----------------------	--	--	--	--	--	----------------------	--	--	--	--	--	----------------------	--	--	--	--	--	----------------------	--	--	--	--	--	----------------------	--	--	--	--	--	----------------------	--	--	--	--	--	----------------------	--	--	--	--	--	----------------------	--	--	--	--	--	----------------------	--	--	--	--	--	----------------------	--	--	--	--	--	----------------------	--	--	--	--	--	----------------------	--	--	--	--	--	----------------------	--	--	--	--	--	----------------------	--	--	--	--	--	----------------------	--	--	--	--	--	----------------------	--	--	--	--	--	----------------------	--	--	--	--	--	----------------------	--	--	--	--	--	----------------------	--	--	--	--	--	----------------------	--	--	--	--	--	----------------------	--	--	--	--	--	----------------------	--	--	--	--	--	----------------------	--	--	--	--	--	----------------------	--	--	--	--	--	----------------------	--	--	--	--	--	----------------------	--	--	--	--	--	----------------------	--	--	--	--	--	----------------------	--	--	--	--	--	----------------------	--	--	--	--	--	----------------------	--	--	--	--	--	----------------------	--	--	--	--	--	----------------------	--	--	--	--	--	----------------------	--	--	--	--	--	----------------------	--	--	--	--	--	----------------------	--	--	--	--	--	----------------------	--	--	--	--	--	----------------------	--	--	--	--	--	----------------------	--	--	--	--	--	----------------------	--	--	--	--	--	----------------------	--	--	--	--	--	----------------------	--	--	--	--	--	----------------------	--	--	--	--	--	----------------------	--	--	--	--	--	----------------------	--	--	--	--	--	----------------------	--	--	--	--	--	----------------------	--	--	--	--	--	----------------------	--	--	--	--	--	----------------------	--	--	--	--	--	----------------------	--	--	--	--	--	----------------------	--	--	--	--	--	----------------------	--	--	--	--	--	----------------------	--	--	--	--	--	----------------------	--	--	--	--	--	----------------------	--	--	--	--	--	----------------------	--	--	--	--	--	----------------------	--	--	--	--	--	----------------------	--	--	--	--	--	----------------------	--	--	--	--	--	----------------------	--	--	--	--	--	----------------------	--	--	--	--	--	----------------------	--	--	--	--	--	----------------------	--	--	--	--	--	----------------------	--	--	--	--	--	----------------------	--	--	--	--	--	----------------------	--	--	--	--	--	----------------------	--	--	--	--	--	----------------------	--	--	--	--	--	----------------------	--	--	--	--	--	----------------------	--	--	--	--	--	----------------------	--	--	--	--	--	----------------------	--	--	--	--	--	----------------------	--	--	--	--	--	----------------------	--	--	--	--	--	----------------------	--	--	--	--	--	----------------------	--	--	--	--	--	----------------------	--	--	--	--	--	----------------------	--	--	--	--	--	----------------------	--	--	--	--	--	----------------------	--	--	--	--	--	----------------------	--	--	--	--	--	----------------------	--	--	--	--	--	----------------------	--	--	--	--	--	----------------------	--	--	--	--	--	----------------------	--	--	--	--	--	----------------------	--	--	--	--	--	----------------------	--	--	--	--	--	----------------------	--	--	--	--	--	----------------------	--	--	--	--	--	----------------------	--	--	--	--	--	----------------------	--	--	--	--	--	----------------------	--	--	--	--	--	----------------------	--	--	--	--	--	----------------------	--	--	--	--	--	----------------------	--	--	--	--	--	----------------------	--	--	--	--	--	----------------------	--	--	--	--	--	----------------------	--	--	--	--	--	----------------------	--	--	--	--	--	----------------------	--	--	--	--	--	----------------------	--	--	--	--	--	----------------------	--	--	--	--	--	----------------------	--	--	--	--	--	----------------------	--	--	--	--	--	----------------------	--	--	--	--	--	----------------------	--	--	--	--	--	----------------------	--	--	--	--	--	----------------------	--	--	--	--	--	----------------------	--	--	--	--	--	----------------------	--	--	--	--	--	----------------------	--	--	--	--	--	----------------------	--	--	--	--	--	----------------------	--	--	--	--	--	----------------------	--	--	--	--	--	----------------------	--	--	--	--	--	----------------------	--	--	--	--	--	----------------------	--	--	--	--	--	----------------------	--	--	--	--	--	----------------------	--	--	--	--	--	----------------------	--	--	--	--	--	----------------------	--	--	--	--	--	----------------------	--	--	--	--	--	----------------------	--	--	--	--	--	----------------------	--	--	--	--	--	----------------------	--	--	--	--	--	----------------------	--	--	--	--	--	----------------------	--	--	--	--	--	----------------------	--	--	--	--	--	----------------------	--	--	--	--	--	----------------------	--	--	--	--	--	----------------------	--	--	--	--	--	----------------------	--	--	--	--	--	----------------------	--	--	--	--	--	----------------------	--	--	--	--	--	----------------------	--	--	--	--	--	----------------------	--	--	--	--	--	----------------------	--	--	--	--	--	----------------------	--	--	--	--	--	----------------------	--	--	--	--	--	----------------------	--	--	--	--	--	----------------------	--	--	--	--	--	----------------------	--	--	--	--	--	----------------------	--	--	--	--	--	----------------------	--	--	--	--	--	----------------------	--	--	--	--	--	----------------------	--	--	--	--	--	----------------------	--	--	--	--	--	----------------------	--	--	--	--	--	----------------------	--	--	--	--	--	----------------------	--	--	--	--	--	----------------------	--	--	--	--	--	----------------------	--	--	--	--	--	----------------------	--	--	--	--	--	----------------------	--	--	--	--	--	----------------------	--	--	--	--	--	----------------------	--	--	--	--	--	----------------------	--	--	--	--	--	----------------------	--	--	--	--	--	----------------------	--	--	--	--	--	----------------------	--	--	--	--	--	----------------------	--	--	--	--	--	----------------------	--	--	--	--	--	------	--	--	--	--	--

Change # Students	-59	-59	-59	-82	-82	-4	-4	-145
-------------------	-----	-----	-----	-----	-----	----	----	------

Change % Students	-18%	-18%	-18%	-46%	-46%	-3%	-3%	-22.2%
-------------------	------	------	------	------	------	-----	-----	--------

### KEY to Number Colors

- |    |  |
|----|--|
| 99 | Standard number with no modifications to methodology   |
| 99 | Provisional, but uncertified births from the NJ Department of Health   |
| 99 | Births projected as an average of the prior 6 years, including provisional data...and projected students resulting from this "less accurate" average |
| 99 | Students per Grade Level added for residential development   |

The above information is prepared and certified by a qualified demographer.

Firm Name: Sundance Associates 117 Greenvale Ct. Cherry Hill NJ 08034

Name: George B. Sundell Tel 856-755-0174 Email: GSundell@sundanceassoc.com

Signature: George D. Gurnea Date: \_\_\_\_\_

[illegible]

Change # Students	106	106	106	-10	-10	-64	-64	33
-------------------	-----	-----	-----	-----	-----	-----	-----	----

Change % Students	100	100	100	10	10	34	34	33
Change % Students	28%	28%	28%	-12%	-12%	-82%	-82%	6%



### Standard Cohort-Survival Enrollment Projection Worksheet

DISTRICT NAME: **Avon Grove School District**

used this...Charter + Cyber for Alt 1

COUNTY: Chester

DATA ISSUES:	Enrollments are from October 1 reports
--------------	--

"s" = survival rate

[illegible]

HISTORIC DATA																																																																																																																																																																																																																																																																																																																																																																																																																																																																																																																																																																																																																																																																																																																																																																																																																																																																																																																																																																																																																																																																																																																																																																																																																																																																																																																																																																																																																									
---------------	--	--	--	--	--	--	--	--	--	--	--	--	--	--	--	--	--	--	--	--	--	--	--	--	--	--	--	--	--	--	--	--	--	--	--	--	--	--	--	--	--	--	--	--	--	--	--	--	--	--	--	--	--	--	--	--	--	--	--	--	--	--	--	--	--	--	--	--	--	--	--	--	--	--	--	--	--	--	--	--	--	--	--	--	--	--	--	--	--	--	--	--	--	--	--	--	--	--	--	--	--	--	--	--	--	--	--	--	--	--	--	--	--	--	--	--	--	--	--	--	--	--	--	--	--	--	--	--	--	--	--	--	--	--	--	--	--	--	--	--	--	--	--	--	--	--	--	--	--	--	--	--	--	--	--	--	--	--	--	--	--	--	--	--	--	--	--	--	--	--	--	--	--	--	--	--	--	--	--	--	--	--	--	--	--	--	--	--	--	--	--	--	--	--	--	--	--	--	--	--	--	--	--	--	--	--	--	--	--	--	--	--	--	--	--	--	--	--	--	--	--	--	--	--	--	--	--	--	--	--	--	--	--	--	--	--	--	--	--	--	--	--	--	--	--	--	--	--	--	--	--	--	--	--	--	--	--	--	--	--	--	--	--	--	--	--	--	--	--	--	--	--	--	--	--	--	--	--	--	--	--	--	--	--	--	--	--	--	--	--	--	--	--	--	--	--	--	--	--	--	--	--	--	--	--	--	--	--	--	--	--	--	--	--	--	--	--	--	--	--	--	--	--	--	--	--	--	--	--	--	--	--	--	--	--	--	--	--	--	--	--	--	--	--	--	--	--	--	--	--	--	--	--	--	--	--	--	--	--	--	--	--	--	--	--	--	--	--	--	--	--	--	--	--	--	--	--	--	--	--	--	--	--	--	--	--	--	--	--	--	--	--	--	--	--	--	--	--	--	--	--	--	--	--	--	--	--	--	--	--	--	--	--	--	--	--	--	--	--	--	--	--	--	--	--	--	--	--	--	--	--	--	--	--	--	--	--	--	--	--	--	--	--	--	--	--	--	--	--	--	--	--	--	--	--	--	--	--	--	--	--	--	--	--	--	--	--	--	--	--	--	--	--	--	--	--	--	--	--	--	--	--	--	--	--	--	--	--	--	--	--	--	--	--	--	--	--	--	--	--	--	--	--	--	--	--	--	--	--	--	--	--	--	--	--	--	--	--	--	--	--	--	--	--	--	--	--	--	--	--	--	--	--	--	--	--	--	--	--	--	--	--	--	--	--	--	--	--	--	--	--	--	--	--	--	--	--	--	--	--	--	--	--	--	--	--	--	--	--	--	--	--	--	--	--	--	--	--	--	--	--	--	--	--	--	--	--	--	--	--	--	--	--	--	--	--	--	--	--	--	--	--	--	--	--	--	--	--	--	--	--	--	--	--	--	--	--	--	--	--	--	--	--	--	--	--	--	--	--	--	--	--	--	--	--	--	--	--	--	--	--	--	--	--	--	--	--	--	--	--	--	--	--	--	--	--	--	--	--	--	--	--	--	--	--	--	--	--	--	--	--	--	--	--	--	--	--	--	--	--	--	--	--	--	--	--	--	--	--	--	--	--	--	--	--	--	--	--	--	--	--	--	--	--	--	--	--	--	--	--	--	--	--	--	--	--	--	--	--	--	--	--	--	--	--	--	--	--	--	--	--	--	--	--	--	--	--	--	--	--	--	--	--	--	--	--	--	--	--	--	--	--	--	--	--	--	--	--	--	--	--	--	--	--	--	--	--	--	--	--	--	--	--	--	--	--	--	--	--	--	--	--	--	--	--	--	--	--	--	--	--	--	--	--	--	--	--	--	--	--	--	--	--	--	--	--	--	--	--	--	--	--	--	--	--	--	--	--	--	--	--	--	--	--	--	--	--	--	--	--	--	--	--	--	--	--	--	--	--	--	--	--	--	--	--	--	--	--	--	--	--	--	--	--	--	--	--	--	--	--	--	--	--	--	--	--	--	--	--	--	--	--	--	--	--	--	--	--	--	--	--	--	--	--	--	--	--	--	--	--	--	--	--	--	--	--	--	--	--	--	--	--	--	--	--	--	--	--	--	--	--	--	--	--	--	--	--	--	--	--	--	--	--	--	--	--	--	--	--	--	--	--	--	--	--	--	--	--	--	--	--	--	--	--	--	--	--	--	--	--	--	--	--	--	--	--	--	--	--	--	--	--	--	--	--	--	--	--	--	--	--	--	--	--	--	--	--	--	--	--	--	--	--	--	--	--	--	--	--	--	--	--	--	--	--	--	--	--	--	--	--	--	--	--	--	--	--	--	--	--	--	--	--	--	--	--	--	--	--	--	--	--	--	--	--	--	--	--	--	--	--	--	--	--	--	--	--	--	--	--	--	--	--	--	--	--	--	--	--	--	--	--	--	--	--	--	--	--	--	--	--	--	--	--	--	--	--	--	--	--	--	--	--	--	--	--	--	--	--	--	--	--	--	--	--	--	--	--	--	--	--	--	--	--	--	--	--	--	--	--	--	--	--	--	--	--	--	--	--	--	--	--	--	--	--	--	--	--	--	--	--	--	--	--	--	--	--	--	--	--	--	--	--	--	--	--	--	--	--	--	--	--	--	--	--	--	--	--	--	--	--	--	--	--	--	--	--	--	--	--	--	--	--	--	--	--	--	--	--	--	--	--	--	--	--	--	--	--	--	--	--	--	--	--	--	--	--	--	--	--	--	--	--	--	--	--	--	--	--	--	--	--	--	--	--	--	--	--	--	--	--	--	--	--	--	--	--	--	--	--	--	--	--	--	--	--	--	--	--	--	--	--	--	--	--	--	--	--	--	--	--	--	--	--	--	--	--	--	--	--	--	--	--	--	--	--	--	--	--	--	--	--	--	--	--	--	--	--	--	--	--	--	--	--	--	--	--	--	--	--	--	--	--	--	--	--	--	--	--	--	--	--	--	--	--	--	--	--	--	--	--	--	--	--	--	--	--	--	--	--	--	--	--	--	--	--	--	--	--	--	--	--	--	--	--	--	--	--	--	--	--	--	--	--	--	--	--	--	--	--	--	--	--	--	--	--	--	--	--	--	--	--	--	--	--	--	--	--	--	--	--	--	--	--	--	--	--	--	--

Change # Students	-193	-193	-193	40	40	46	46	-107
-------------------	------	------	------	----	----	----	----	------

Change % Students	-35%	-35%	-35%	26%	26%	35%	35%	-13%
-------------------	------	------	------	-----	-----	-----	-----	------

5-YR PROJECTIONS			0.9410.9720.8260.8480.994																																																																																																																																																																																																																																																																																																																																																																																																																																																																																																																																																																																																																																																																																																																																																																																																																																																																																																																																																																																																																																																																																																																																																																																																																																																																																																																																																																																																																		</
------------------	--	--	---------------------------	--	--	--	--	--	--	--	--	--	--	--	--	--	--	--	--	--	--	--	--	--	--	--	--	--	--	--	--	--	--	--	--	--	--	--	--	--	--	--	--	--	--	--	--	--	--	--	--	--	--	--	--	--	--	--	--	--	--	--	--	--	--	--	--	--	--	--	--	--	--	--	--	--	--	--	--	--	--	--	--	--	--	--	--	--	--	--	--	--	--	--	--	--	--	--	--	--	--	--	--	--	--	--	--	--	--	--	--	--	--	--	--	--	--	--	--	--	--	--	--	--	--	--	--	--	--	--	--	--	--	--	--	--	--	--	--	--	--	--	--	--	--	--	--	--	--	--	--	--	--	--	--	--	--	--	--	--	--	--	--	--	--	--	--	--	--	--	--	--	--	--	--	--	--	--	--	--	--	--	--	--	--	--	--	--	--	--	--	--	--	--	--	--	--	--	--	--	--	--	--	--	--	--	--	--	--	--	--	--	--	--	--	--	--	--	--	--	--	--	--	--	--	--	--	--	--	--	--	--	--	--	--	--	--	--	--	--	--	--	--	--	--	--	--	--	--	--	--	--	--	--	--	--	--	--	--	--	--	--	--	--	--	--	--	--	--	--	--	--	--	--	--	--	--	--	--	--	--	--	--	--	--	--	--	--	--	--	--	--	--	--	--	--	--	--	--	--	--	--	--	--	--	--	--	--	--	--	--	--	--	--	--	--	--	--	--	--	--	--	--	--	--	--	--	--	--	--	--	--	--	--	--	--	--	--	--	--	--	--	--	--	--	--	--	--	--	--	--	--	--	--	--	--	--	--	--	--	--	--	--	--	--	--	--	--	--	--	--	--	--	--	--	--	--	--	--	--	--	--	--	--	--	--	--	--	--	--	--	--	--	--	--	--	--	--	--	--	--	--	--	--	--	--	--	--	--	--	--	--	--	--	--	--	--	--	--	--	--	--	--	--	--	--	--	--	--	--	--	--	--	--	--	--	--	--	--	--	--	--	--	--	--	--	--	--	--	--	--	--	--	--	--	--	--	--	--	--	--	--	--	--	--	--	--	--	--	--	--	--	--	--	--	--	--	--	--	--	--	--	--	--	--	--	--	--	--	--	--	--	--	--	--	--	--	--	--	--	--	--	--	--	--	--	--	--	--	--	--	--	--	--	--	--	--	--	--	--	--	--	--	--	--	--	--	--	--	--	--	--	--	--	--	--	--	--	--	--	--	--	--	--	--	--	--	--	--	--	--	--	--	--	--	--	--	--	--	--	--	--	--	--	--	--	--	--	--	--	--	--	--	--	--	--	--	--	--	--	--	--	--	--	--	--	--	--	--	--	--	--	--	--	--	--	--	--	--	--	--	--	--	--	--	--	--	--	--	--	--	--	--	--	--	--	--	--	--	--	--	--	--	--	--	--	--	--	--	--	--	--	--	--	--	--	--	--	--	--	--	--	--	--	--	--	--	--	--	--	--	--	--	--	--	--	--	--	--	--	--	--	--	--	--	--	--	--	--	--	--	--	--	--	--	--	--	--	--	--	--	--	--	--	--	--	--	--	--	--	--	--	--	--	--	--	--	--	--	--	--	--	--	--	--	--	--	--	--	--	--	--	--	--	--	--	--	--	--	--	--	--	--	--	--	--	--	--	--	--	--	--	--	--	--	--	--	--	--	--	--	--	--	--	--	--	--	--	--	--	--	--	--	--	--	--	--	--	--	--	--	--	--	--	--	--	--	--	--	--	--	--	--	--	--	--	--	--	--	--	--	--	--	--	--	--	--	--	--	--	--	--	--	--	--	--	--	--	--	--	--	--	--	--	--	--	--	--	--	--	--	--	--	--	--	--	--	--	--	--	--	--	--	--	--	--	--	--	--	--	--	--	--	--	--	--	--	--	--	--	--	--	--	--	--	--	--	--	--	--	--	--	--	--	--	--	--	--	--	--	--	--	--	--	--	--	--	--	--	--	--	--	--	--	--	--	--	--	--	--	--	--	--	--	--	--	--	--	--	--	--	--	--	--	--	--	--	--	--	--	--	--	--	--	--	--	--	--	--	--	--	--	--	--	--	--	--	--	--	--	--	--	--	--	--	--	--	--	--	--	--	--	--	--	--	--	--	--	--	--	--	--	--	--	--	--	--	--	--	--	--	--	--	--	--	--	--	--	--	--	--	--	--	--	--	--	--	--	--	--	--	--	--	--	--	--	--	--	--	--	--	--	--	--	--	--	--	--	--	--	--	--	--	--	--	--	--	--	--	--	--	--	--	--	--	--	--	--	--	--	--	--	--	--	--	--	--	--	--	--	--	--	--	--	--	--	--	--	--	--	--	--	--	--	--	--	--	--	--	--	--	--	--	--	--	--	--	--	--	--	--	--	--	--	--	--	--	--	--	--	--	--	--	--	--	--	--	--	--	--	--	--	--	--	--	--	--	--	--	--	--	--	--	--	--	--	--	--	--	--	--	--	--	--	--	--	--	--	--	--	--	--	--	--	--	--	--	--	--	--	--	--	--	--	--	--	--	--	--	--	--	--	--	--	--	--	--	--	--	--	--	--	--	--	--	--	--	--	--	--	--	--	--	--	--	--	--	--	--	--	--	--	--	--	--	--	--	--	--	--	--	--	--	--	--	--	--	--	--	--	--	--	--	--	--	--	--	--	--	--	--	--	--	--	--	--	--	--	--	--	--	--	--	--	--	--	--	--	--	--	--	--	--	--	--	--	--	--	--	--	--	--	--	--	--	--	--	--	--	--	--	--	--	--	--	--	--	--	--	--	--	--	--	--	--	--	--	--	--	--	--	--	--	--	--	--	--	--	--	--	--	--	--	--	--	--	--	--	--	--	--	--	--	--	--	--	--	--	--	--	--	--	--	--	--	--	--	--	--	--	--	--	--	--	--	--	--	--	--	--	--	--	--	--	--	--	--	--	--	--	--	--	--	--	--	--	--	--	--	--	--	--	--	--	--	--	--	--	--	--	--	--	--	--	--	--	--	--	--	--	--	--	--	--	--	--	--	--	--	--	--	--	--	--	--	--	--	--	--	--	--	--	--	--	--	--	--	--	--	--	--	--	--	--	----

Change # Students	-64	-64	-64	-83	-83	14	14	-133
-------------------	-----	-----	-----	-----	-----	----	----	------

Change % Students	-18%	-18%	-18%	-42%	-42%	8%	8%	-18.2%
-------------------	------	------	------	------	------	----	----	--------

### KEY to Number Colors

- 99 Standard number with no modifications to methodology
- 99 Provisional, but uncertified births from the NJ Department of Health
- 99 Births projected as an average of the prior 6 years, including provisional data...and projected students resulting from this "less accurate" average
- 99 Students per Grade Level added for residential development

**The above information is prepared and certified by a qualified demographer.**

Firm Name: Sundance Associates 117 Greenvale Ct. Cherry Hill NJ 08034

Name: George B. Sundell Tel 856-755-0174 Email: GSundell@sundanceassoc.com

Signature: George D. Zamboni Date: \_\_\_\_\_

[illegible]

Change # Students	104	104	104	-12	-12	-80	-80	12
-------------------	-----	-----	-----	-----	-----	-----	-----	----

Change % Students	26%	26%	26%	-12%	-12%	-73%	-73%	2%
-------------------	-----	-----	-----	------	------	------	------	----

### Standard Cohort-Survival Enrollment Projection Worksheet

DISTRICT NAME: **COMBINED Avon Grove Schools: for Alt 1 "All"**

COUNTY: Chester

DATA ISSUES: Enrollments are from October 1 reports

"s" = survival rate

[illegible]

HISTORIC DATA																																																																																																																																																																																																																																																																																																																																																																																																																																																																																																																																																																																																																																																																																																																																																																																																																																																																																																																																																																																																																																																																																																																																																																																																																																																																																																																																																																																																																																											</
---------------	--	--	--	--	--	--	--	--	--	--	--	--	--	--	--	--	--	--	--	--	--	--	--	--	--	--	--	--	--	--	--	--	--	--	--	--	--	--	--	--	--	--	--	--	--	--	--	--	--	--	--	--	--	--	--	--	--	--	--	--	--	--	--	--	--	--	--	--	--	--	--	--	--	--	--	--	--	--	--	--	--	--	--	--	--	--	--	--	--	--	--	--	--	--	--	--	--	--	--	--	--	--	--	--	--	--	--	--	--	--	--	--	--	--	--	--	--	--	--	--	--	--	--	--	--	--	--	--	--	--	--	--	--	--	--	--	--	--	--	--	--	--	--	--	--	--	--	--	--	--	--	--	--	--	--	--	--	--	--	--	--	--	--	--	--	--	--	--	--	--	--	--	--	--	--	--	--	--	--	--	--	--	--	--	--	--	--	--	--	--	--	--	--	--	--	--	--	--	--	--	--	--	--	--	--	--	--	--	--	--	--	--	--	--	--	--	--	--	--	--	--	--	--	--	--	--	--	--	--	--	--	--	--	--	--	--	--	--	--	--	--	--	--	--	--	--	--	--	--	--	--	--	--	--	--	--	--	--	--	--	--	--	--	--	--	--	--	--	--	--	--	--	--	--	--	--	--	--	--	--	--	--	--	--	--	--	--	--	--	--	--	--	--	--	--	--	--	--	--	--	--	--	--	--	--	--	--	--	--	--	--	--	--	--	--	--	--	--	--	--	--	--	--	--	--	--	--	--	--	--	--	--	--	--	--	--	--	--	--	--	--	--	--	--	--	--	--	--	--	--	--	--	--	--	--	--	--	--	--	--	--	--	--	--	--	--	--	--	--	--	--	--	--	--	--	--	--	--	--	--	--	--	--	--	--	--	--	--	--	--	--	--	--	--	--	--	--	--	--	--	--	--	--	--	--	--	--	--	--	--	--	--	--	--	--	--	--	--	--	--	--	--	--	--	--	--	--	--	--	--	--	--	--	--	--	--	--	--	--	--	--	--	--	--	--	--	--	--	--	--	--	--	--	--	--	--	--	--	--	--	--	--	--	--	--	--	--	--	--	--	--	--	--	--	--	--	--	--	--	--	--	--	--	--	--	--	--	--	--	--	--	--	--	--	--	--	--	--	--	--	--	--	--	--	--	--	--	--	--	--	--	--	--	--	--	--	--	--	--	--	--	--	--	--	--	--	--	--	--	--	--	--	--	--	--	--	--	--	--	--	--	--	--	--	--	--	--	--	--	--	--	--	--	--	--	--	--	--	--	--	--	--	--	--	--	--	--	--	--	--	--	--	--	--	--	--	--	--	--	--	--	--	--	--	--	--	--	--	--	--	--	--	--	--	--	--	--	--	--	--	--	--	--	--	--	--	--	--	--	--	--	--	--	--	--	--	--	--	--	--	--	--	--	--	--	--	--	--	--	--	--	--	--	--	--	--	--	--	--	--	--	--	--	--	--	--	--	--	--	--	--	--	--	--	--	--	--	--	--	--	--	--	--	--	--	--	--	--	--	--	--	--	--	--	--	--	--	--	--	--	--	--	--	--	--	--	--	--	--	--	--	--	--	--	--	--	--	--	--	--	--	--	--	--	--	--	--	--	--	--	--	--	--	--	--	--	--	--	--	--	--	--	--	--	--	--	--	--	--	--	--	--	--	--	--	--	--	--	--	--	--	--	--	--	--	--	--	--	--	--	--	--	--	--	--	--	--	--	--	--	--	--	--	--	--	--	--	--	--	--	--	--	--	--	--	--	--	--	--	--	--	--	--	--	--	--	--	--	--	--	--	--	--	--	--	--	--	--	--	--	--	--	--	--	--	--	--	--	--	--	--	--	--	--	--	--	--	--	--	--	--	--	--	--	--	--	--	--	--	--	--	--	--	--	--	--	--	--	--	--	--	--	--	--	--	--	--	--	--	--	--	--	--	--	--	--	--	--	--	--	--	--	--	--	--	--	--	--	--	--	--	--	--	--	--	--	--	--	--	--	--	--	--	--	--	--	--	--	--	--	--	--	--	--	--	--	--	--	--	--	--	--	--	--	--	--	--	--	--	--	--	--	--	--	--	--	--	--	--	--	--	--	--	--	--	--	--	--	--	--	--	--	--	--	--	--	--	--	--	--	--	--	--	--	--	--	--	--	--	--	--	--	--	--	--	--	--	--	--	--	--	--	--	--	--	--	--	--	--	--	--	--	--	--	--	--	--	--	--	--	--	--	--	--	--	--	--	--	--	--	--	--	--	--	--	--	--	--	--	--	--	--	--	--	--	--	--	--	--	--	--	--	--	--	--	--	--	--	--	--	--	--	--	--	--	--	--	--	--	--	--	--	--	--	--	--	--	--	--	--	--	--	--	--	--	--	--	--	--	--	--	--	--	--	--	--	--	--	--	--	--	--	--	--	--	--	--	--	--	--	--	--	--	--	--	--	--	--	--	--	--	--	--	--	--	--	--	--	--	--	--	--	--	--	--	--	--	--	--	--	--	--	--	--	--	--	--	--	--	--	--	--	--	--	--	--	--	--	--	--	--	--	--	--	--	--	--	--	--	--	--	--	--	--	--	--	--	--	--	--	--	--	--	--	--	--	--	--	--	--	--	--	--	--	--	--	--	--	--	--	--	--	--	--	--	--	--	--	--	--	--	--	--	--	--	--	--	--	--	--	--	--	--	--	--	--	--	--	--	--	--	--	--	--	--	--	--	--	--	--	--	--	--	--	--	--	--	--	--	--	--	--	--	--	--	--	--	--	--	--	--	--	--	--	--	--	--	--	--	--	--	--	--	--	--	--	--	--	--	--	--	--	--	--	--	--	--	--	--	--	--	--	--	--	--	--	--	--	--	--	--	--	--	--	--	--	--	--	--	--	--	--	--	--	--	--	--	--	--	--	--	--	--	--	--	--	--	--	--	--	--	--	--	--	--	--	--	--	--	--	--	--	--	--	--	--	--	--	--	--	--	--	--	--	--	--	--	--	--	--	--	--	--	--	--	--	--	--	--	--	--	--	--	--	--	--	--	--	--	--	--	--	--	--	--	--	--	--	--	--	--	--	--	--	--	--	--	--	--	--	--	--	--	--	--	--	--	--	--	--	--	--	--	--	--	--	--	--	--	--	--	--	--	--	--	--	----

Change # Students	-49	-49	-49	29	29	-14	-14	-34
Change % Students	-2%	-2%	-2%	2%	2%	-1%	-1%	-1%

5-YR PROJECTIONS			1.0701.0281.0301.0141.022												1.0701.0281.0301.0141.022												1.0701.0281.0301.0141.022												1.0701.0281.0301.0141.022												1.0701.0281.0301.0141.022												1.0701.0281.0301.0141.022												1.0701.0281.0301.0141.022												1.0701.0281.0301.0141.022												1.0701.0281.0301.0141.022												1.0701.0281.0301.0141.022												1.0701.0281.0301.0141.022												1.0701.0281.0301.0141.022												1.0701.0281.0301.0141.022												1.0701.0281.0301.0141.022												1.0701.0281.0301.0141.022												1.0701.0281.0301.0141.022												1.0701.0281.0301.0141.022												1.0701.0281.0301.0141.022												1.0701.0281.0301.0141.022												1.0701.0281.0301.0141.022												1.0701.0281.0301.0141.022												1.0701.0281.0301.0141.022												1.0701.0281.0301.0141.022												1.0701.0281.0301.0141.022												1.0701.0281.0301.0141.022												1.0701.0281.0301.0141.022												1.0701.0281.0301.0141.022												1.0701.0281.0301.0141.022												1.0701.0281.0301.0141.022												1.0701.0281.0301.0141.022												1.0701.0281.0301.0141.022												1.0701.0281.0301.0141.022												1.0701.0281.0301.0141.022												1.0701.0281.0301.0141.022												1.0701.0281.0301.0141.022												1.0701.0281.0301.0141.022												1.0701.0281.0301.0141.022												1.0701.0281.0301.0141.022												1.0701.0281.0301.0141.022												1.0701.0281.0301.0141.022												1.0701.0281.0301.0141.022												1.0701.0281.0301.0141.022												1.0701.0281.0301.0141.022												1.0701.0281.0301.0141.022												1.0701.0281.0301.0141.022												1.0701.0281.0301.0141.022												1.0701.0281.0301.0141.022												1.0701.0281.0301.0141.022												1.0701.0281.0301.0141.022												1.0701.0281.0301.0141.022												1.0701.0281.0301.0141.022												1.0701.0281.0301.0141.022												1.0701.0281.0301.0141.022												1.0701.0281.0301.0141.022												1.0701.0281.0301.0141.022												1.0701.0281.0301.0141.022												1.0701.0281.0301.0141.022												1.0701.0281.0301.0141.022												1.0701.0281.0301.0141.022												1.0701.0281.0301.0141.022												1.0701.0281.0301.0141.022												1.0701.0281.0301.0141.022												1.0701.0281.0301.0141.022												1.0701.0281.0301.0141.022												1.0701.0281.0301.0141.022												1.0701.0281.0301.0141.022												1.0701.0281.0301.0141.022												1.0701.0281.0301.0141.022												1.0701.0281.0301.0141.022												1.0701.0281.0301.0141.022												1.0701.0281.0301.0141.022												1.0701.0281.0301.0141.022												1.0701.0281.0301.0141.022												1.0701.0281.0301.0141.022												1.0701.0281.0301.0141.022												1.0701.0281.0301.0141.022												1.0701.0281.0301.0141.022												1.0701.0281.0301.0141.022												1.0701.0281.0301.0141.022												1.0701.0281.0301.0141.022												1.0701.0281.0301.0141.022												1.0701.0281.0301.0141.022												1.0701.0281.0301.0141.022												1.0701.0281.0301.0141.022												1.0701.0281.0301.0141.022												1.0701.0281.0301.0141.022												1.0701.0281.0301.0141.022												1.0701.0281.0301.0141.022												1.0701.0281.0301.0141.022												1.0701.0281.0301.0141.022												1.0701.0281.0301.0141.022												1.0701.0281.0301.0141.022												1.0701.0281.0301.0141.022												1.0701.0281.0301.0141.022												1.0701.0281.0301.0141.022												1.0701.0281.0301.0141.022												1.0701.0281.0301.0141.022												1.0701.0281.0301.0141.022												1.0701.0281.0301.0141.022												1.0701.0281.0301.0141.022												1.0701.0281.0301.0141.022												1.0701.0281.0301.0141.022												1.0701.0281.0301.0141.022												1.0701.0281.0301.0141.022												1.0701.0281.0301.0141.022												1.0701.0281.0301.0141.022												1.0701.0281.0301.0141.022												1.0701.0281.0301.0141.022												1.0701.0281.0301.0141.022												1.0701.0281.0301.0141.022												1.0701.0281.0301.0141.022												1.0701.0281.0301.0141.022												1.0701.0281.0301.0141.022												1.0701.0281.0301.0141.022												1.0701.0281.0301.0141.022												1.0701.0281.0301.0141.022												1.0701.0281.0301.0141.022												1.0701.0281.0301.0141.022												1.0701.0281.0301.0141.022												1.0701.0281.0301.0141.022												1.0701.0281.0301.0141.022												1.0701.0281.0301.0141.022												1.0701.0281.0301.0141.022												1.0701.0281.0301.0141.022												1.0701.0281.0301.0141.022												1.0701.0281.0301.0141.022												1.0701.0281.0301.0141.022												1.0701.0281.0301.0141.022												1.0701.0281.0301.0141.022												1.0701.0281.0301.0141.022												1.0701.0281.0301.0141.022												1.0701.0281.0301.0141.022												1.0701.0281.0301.0141.022												1.0701.0281.0301.0141.022												1.0701.0281.0301.0141.022												1.0701.0281.0301.0141.022												1.0701.0281.0301.0141.022												1.0701.0281.0301.0141.022												1.0701.0281.0301.0141.022												1.0701.0281.0301.0141.022												1.0701.0281.0301.0141.022												1.0701.0281.0301.0141.022												1.0701.0281.0301.0141.022												1.0701.0281.0301.0141.022												1.0701.0281.0301.0141.022												1.0701.0281.0301.0141.022												1.0701.0281.0301.0141.022												1.0701.0281.0301.0141.022												1.0701.0281.0301.0141.022												1.0701.0281.0301.0141.022												1.0701.0281.0301.0141.022												1.0701.0281.0301.0141.022												1.0701.0281.0301.0141.022												1.0701.0281.0301.0141.022												1.0701.0281.0301.0141.022												1.0701.0281.0301.0141.022												1.0701.0281.0301.0141.022												1.0701.0281.0301.0141.022												1.0701.0281.0301.0141.022												1.0701.0281.0301.0141.022												1.0701.0281.0301.0141.022												1.0701.0281.0301.0141.022												1.0701.0281.0301.0141.022												1.0701.0281.0301.0141.022												1.0701.0281.0301.0141.022												1.0701.0281.0301.0141.022												1.0701.0281.0301.0141.022												1.0701.0281.0301.0141.022												1.0701.0281.0301.0141.022												1.0701.0281.0301.0141.022												1.0701.0281.0301.0141.022												1.0701.0281.0301.0141.022												1.0701.0281.0301.0141.022												1.0701.0281.0301.0141.022												1.0701.0281.0301.0141.022												1.0701.0281.0301.0141.022												1.0701.0281.0301.0141.022												1.0701.0281.0301.0141.022												1.0701.0281.0301.0141.022												1.0701.0281.0301.0141.022												1.0701.0281.0301.0141.022												1.0701.0281.0301.0141.022												1.0701.0281.0301.0141.022												1.0701.0281.0301.0141.022												1.0701.0281.0301.0141.022												1.0701.0281.0301.0141.022												1.0701.0281.0301.0141.022												1.0701.0281.0301.0141.022												1.0701.0281.0301.0141.022												1.0701.0281.0301.0141.022												1.0701.0281.0301.0					
------------------	--	--	---------------------------	--	--	--	--	--	--	--	--	--	--	--	---------------------------	--	--	--	--	--	--	--	--	--	--	--	---------------------------	--	--	--	--	--	--	--	--	--	--	--	---------------------------	--	--	--	--	--	--	--	--	--	--	--	---------------------------	--	--	--	--	--	--	--	--	--	--	--	---------------------------	--	--	--	--	--	--	--	--	--	--	--	---------------------------	--	--	--	--	--	--	--	--	--	--	--	---------------------------	--	--	--	--	--	--	--	--	--	--	--	---------------------------	--	--	--	--	--	--	--	--	--	--	--	---------------------------	--	--	--	--	--	--	--	--	--	--	--	---------------------------	--	--	--	--	--	--	--	--	--	--	--	---------------------------	--	--	--	--	--	--	--	--	--	--	--	---------------------------	--	--	--	--	--	--	--	--	--	--	--	---------------------------	--	--	--	--	--	--	--	--	--	--	--	---------------------------	--	--	--	--	--	--	--	--	--	--	--	---------------------------	--	--	--	--	--	--	--	--	--	--	--	---------------------------	--	--	--	--	--	--	--	--	--	--	--	---------------------------	--	--	--	--	--	--	--	--	--	--	--	---------------------------	--	--	--	--	--	--	--	--	--	--	--	---------------------------	--	--	--	--	--	--	--	--	--	--	--	---------------------------	--	--	--	--	--	--	--	--	--	--	--	---------------------------	--	--	--	--	--	--	--	--	--	--	--	---------------------------	--	--	--	--	--	--	--	--	--	--	--	---------------------------	--	--	--	--	--	--	--	--	--	--	--	---------------------------	--	--	--	--	--	--	--	--	--	--	--	---------------------------	--	--	--	--	--	--	--	--	--	--	--	---------------------------	--	--	--	--	--	--	--	--	--	--	--	---------------------------	--	--	--	--	--	--	--	--	--	--	--	---------------------------	--	--	--	--	--	--	--	--	--	--	--	---------------------------	--	--	--	--	--	--	--	--	--	--	--	---------------------------	--	--	--	--	--	--	--	--	--	--	--	---------------------------	--	--	--	--	--	--	--	--	--	--	--	---------------------------	--	--	--	--	--	--	--	--	--	--	--	---------------------------	--	--	--	--	--	--	--	--	--	--	--	---------------------------	--	--	--	--	--	--	--	--	--	--	--	---------------------------	--	--	--	--	--	--	--	--	--	--	--	---------------------------	--	--	--	--	--	--	--	--	--	--	--	---------------------------	--	--	--	--	--	--	--	--	--	--	--	---------------------------	--	--	--	--	--	--	--	--	--	--	--	---------------------------	--	--	--	--	--	--	--	--	--	--	--	---------------------------	--	--	--	--	--	--	--	--	--	--	--	---------------------------	--	--	--	--	--	--	--	--	--	--	--	---------------------------	--	--	--	--	--	--	--	--	--	--	--	---------------------------	--	--	--	--	--	--	--	--	--	--	--	---------------------------	--	--	--	--	--	--	--	--	--	--	--	---------------------------	--	--	--	--	--	--	--	--	--	--	--	---------------------------	--	--	--	--	--	--	--	--	--	--	--	---------------------------	--	--	--	--	--	--	--	--	--	--	--	---------------------------	--	--	--	--	--	--	--	--	--	--	--	---------------------------	--	--	--	--	--	--	--	--	--	--	--	---------------------------	--	--	--	--	--	--	--	--	--	--	--	---------------------------	--	--	--	--	--	--	--	--	--	--	--	---------------------------	--	--	--	--	--	--	--	--	--	--	--	---------------------------	--	--	--	--	--	--	--	--	--	--	--	---------------------------	--	--	--	--	--	--	--	--	--	--	--	---------------------------	--	--	--	--	--	--	--	--	--	--	--	---------------------------	--	--	--	--	--	--	--	--	--	--	--	---------------------------	--	--	--	--	--	--	--	--	--	--	--	---------------------------	--	--	--	--	--	--	--	--	--	--	--	---------------------------	--	--	--	--	--	--	--	--	--	--	--	---------------------------	--	--	--	--	--	--	--	--	--	--	--	---------------------------	--	--	--	--	--	--	--	--	--	--	--	---------------------------	--	--	--	--	--	--	--	--	--	--	--	---------------------------	--	--	--	--	--	--	--	--	--	--	--	---------------------------	--	--	--	--	--	--	--	--	--	--	--	---------------------------	--	--	--	--	--	--	--	--	--	--	--	---------------------------	--	--	--	--	--	--	--	--	--	--	--	---------------------------	--	--	--	--	--	--	--	--	--	--	--	---------------------------	--	--	--	--	--	--	--	--	--	--	--	---------------------------	--	--	--	--	--	--	--	--	--	--	--	---------------------------	--	--	--	--	--	--	--	--	--	--	--	---------------------------	--	--	--	--	--	--	--	--	--	--	--	---------------------------	--	--	--	--	--	--	--	--	--	--	--	---------------------------	--	--	--	--	--	--	--	--	--	--	--	---------------------------	--	--	--	--	--	--	--	--	--	--	--	---------------------------	--	--	--	--	--	--	--	--	--	--	--	---------------------------	--	--	--	--	--	--	--	--	--	--	--	---------------------------	--	--	--	--	--	--	--	--	--	--	--	---------------------------	--	--	--	--	--	--	--	--	--	--	--	---------------------------	--	--	--	--	--	--	--	--	--	--	--	---------------------------	--	--	--	--	--	--	--	--	--	--	--	---------------------------	--	--	--	--	--	--	--	--	--	--	--	---------------------------	--	--	--	--	--	--	--	--	--	--	--	---------------------------	--	--	--	--	--	--	--	--	--	--	--	---------------------------	--	--	--	--	--	--	--	--	--	--	--	---------------------------	--	--	--	--	--	--	--	--	--	--	--	---------------------------	--	--	--	--	--	--	--	--	--	--	--	---------------------------	--	--	--	--	--	--	--	--	--	--	--	---------------------------	--	--	--	--	--	--	--	--	--	--	--	---------------------------	--	--	--	--	--	--	--	--	--	--	--	---------------------------	--	--	--	--	--	--	--	--	--	--	--	---------------------------	--	--	--	--	--	--	--	--	--	--	--	---------------------------	--	--	--	--	--	--	--	--	--	--	--	---------------------------	--	--	--	--	--	--	--	--	--	--	--	---------------------------	--	--	--	--	--	--	--	--	--	--	--	---------------------------	--	--	--	--	--	--	--	--	--	--	--	---------------------------	--	--	--	--	--	--	--	--	--	--	--	---------------------------	--	--	--	--	--	--	--	--	--	--	--	---------------------------	--	--	--	--	--	--	--	--	--	--	--	---------------------------	--	--	--	--	--	--	--	--	--	--	--	---------------------------	--	--	--	--	--	--	--	--	--	--	--	---------------------------	--	--	--	--	--	--	--	--	--	--	--	---------------------------	--	--	--	--	--	--	--	--	--	--	--	---------------------------	--	--	--	--	--	--	--	--	--	--	--	---------------------------	--	--	--	--	--	--	--	--	--	--	--	---------------------------	--	--	--	--	--	--	--	--	--	--	--	---------------------------	--	--	--	--	--	--	--	--	--	--	--	---------------------------	--	--	--	--	--	--	--	--	--	--	--	---------------------------	--	--	--	--	--	--	--	--	--	--	--	---------------------------	--	--	--	--	--	--	--	--	--	--	--	---------------------------	--	--	--	--	--	--	--	--	--	--	--	---------------------------	--	--	--	--	--	--	--	--	--	--	--	---------------------------	--	--	--	--	--	--	--	--	--	--	--	---------------------------	--	--	--	--	--	--	--	--	--	--	--	---------------------------	--	--	--	--	--	--	--	--	--	--	--	---------------------------	--	--	--	--	--	--	--	--	--	--	--	---------------------------	--	--	--	--	--	--	--	--	--	--	--	---------------------------	--	--	--	--	--	--	--	--	--	--	--	---------------------------	--	--	--	--	--	--	--	--	--	--	--	---------------------------	--	--	--	--	--	--	--	--	--	--	--	---------------------------	--	--	--	--	--	--	--	--	--	--	--	---------------------------	--	--	--	--	--	--	--	--	--	--	--	---------------------------	--	--	--	--	--	--	--	--	--	--	--	---------------------------	--	--	--	--	--	--	--	--	--	--	--	---------------------------	--	--	--	--	--	--	--	--	--	--	--	---------------------------	--	--	--	--	--	--	--	--	--	--	--	---------------------------	--	--	--	--	--	--	--	--	--	--	--	---------------------------	--	--	--	--	--	--	--	--	--	--	--	---------------------------	--	--	--	--	--	--	--	--	--	--	--	---------------------------	--	--	--	--	--	--	--	--	--	--	--	---------------------------	--	--	--	--	--	--	--	--	--	--	--	---------------------------	--	--	--	--	--	--	--	--	--	--	--	---------------------------	--	--	--	--	--	--	--	--	--	--	--	---------------------------	--	--	--	--	--	--	--	--	--	--	--	---------------------------	--	--	--	--	--	--	--	--	--	--	--	---------------------------	--	--	--	--	--	--	--	--	--	--	--	---------------------------	--	--	--	--	--	--	--	--	--	--	--	---------------------------	--	--	--	--	--	--	--	--	--	--	--	---------------------------	--	--	--	--	--	--	--	--	--	--	--	---------------------------	--	--	--	--	--	--	--	--	--	--	--	---------------------------	--	--	--	--	--	--	--	--	--	--	--	---------------------------	--	--	--	--	--	--	--	--	--	--	--	---------------------------	--	--	--	--	--	--	--	--	--	--	--	---------------------------	--	--	--	--	--	--	--	--	--	--	--	---------------------------	--	--	--	--	--	--	--	--	--	--	--	---------------------------	--	--	--	--	--	--	--	--	--	--	--	---------------------------	--	--	--	--	--	--	--	--	--	--	--	---------------------------	--	--	--	--	--	--	--	--	--	--	--	---------------------------	--	--	--	--	--	--	--	--	--	--	--	---------------------------	--	--	--	--	--	--	--	--	--	--	--	---------------------------	--	--	--	--	--	--	--	--	--	--	--	---------------------------	--	--	--	--	--	--	--	--	--	--	--	---------------------------	--	--	--	--	--	--	--	--	--	--	--	---------------------------	--	--	--	--	--	--	--	--	--	--	--	---------------------------	--	--	--	--	--	--	--	--	--	--	--	---------------------------	--	--	--	--	--	--	--	--	--	--	--	---------------------------	--	--	--	--	--	--	--	--	--	--	--	---------------------------	--	--	--	--	--	--	--	--	--	--	--	---------------------------	--	--	--	--	--	--	--	--	--	--	--	---------------------------	--	--	--	--	--	--	--	--	--	--	--	---------------------------	--	--	--	--	--	--	--	--	--	--	--	---------------------------	--	--	--	--	--	--	--	--	--	--	--	---------------------------	--	--	--	--	--	--	--	--	--	--	--	---------------------------	--	--	--	--	--	--	--	--	--	--	--	---------------------------	--	--	--	--	--	--	--	--	--	--	--	---------------------------	--	--	--	--	--	--	--	--	--	--	--	---------------------------	--	--	--	--	--	--	--	--	--	--	--	---------------------------	--	--	--	--	--	--	--	--	--	--	--	---------------------------	--	--	--	--	--	--	--	--	--	--	--	---------------------------	--	--	--	--	--	--	--	--	--	--	--	---------------------------	--	--	--	--	--	--	--	--	--	--	--	---------------------------	--	--	--	--	--	--	--	--	--	--	--	---------------------------	--	--	--	--	--	--	--	--	--	--	--	---------------------------	--	--	--	--	--	--	--	--	--	--	--	---------------------------	--	--	--	--	--	--	--	--	--	--	--	---------------------------	--	--	--	--	--	--	--	--	--	--	--	---------------------------	--	--	--	--	--	--	--	--	--	--	--	---------------------------	--	--	--	--	--	--	--	--	--	--	--	---------------------------	--	--	--	--	--	--	--	--	--	--	--	---------------------------	--	--	--	--	--	--	--	--	--	--	--	---------------------------	--	--	--	--	--	--	--	--	--	--	--	---------------------------	--	--	--	--	--	--	--	--	--	--	--	---------------------------	--	--	--	--	--	--	--	--	--	--	--	---------------------------	--	--	--	--	--	--	--	--	--	--	--	---------------------------	--	--	--	--	--	--	--	--	--	--	--	---------------------------	--	--	--	--	--	--	--	--	--	--	--	---------------------------	--	--	--	--	--	--	--	--	--	--	--	---------------------------	--	--	--	--	--	--	--	--	--	--	--	---------------------------	--	--	--	--	--	--	--	--	--	--	--	---------------------------	--	--	--	--	--	--	--	--	--	--	--	--------------------	--	--	--	--	--

Change # Students	212	212	212	-51	-51	-74	-74	88
Change % Students	9%	9%	9%	-4%	-4%	-4%	-4%	1.5%

### KEY to Number Colors

- |    |  |
|----|--|
| 99 | Standard number with no modifications to methodology   |
| 99 | Provisional, but uncertified births from the NJ Department of Health   |
| 99 | Births projected as an average of the prior 6 years, including provisional data...and projected students resulting from this "less accurate" average |
| 99 | Students per Grade Level added for residential development   |

The above information is prepared and certified by a qualified demographer.

Firm Name: Sundance Associates 117 Greenvale Ct. Cherry Hill NJ 08034

Name: George B. Sundell Tel 856-755-0174 Email: GSundell@sundanceassoc.com

Signature: George F. Jankin Date: November 15, 2021

[illegible]

Change # Students	9	9	9	92	92	130	130	231
Change % Students	0%	0%	0%	6%	6%	7%	7%	4%